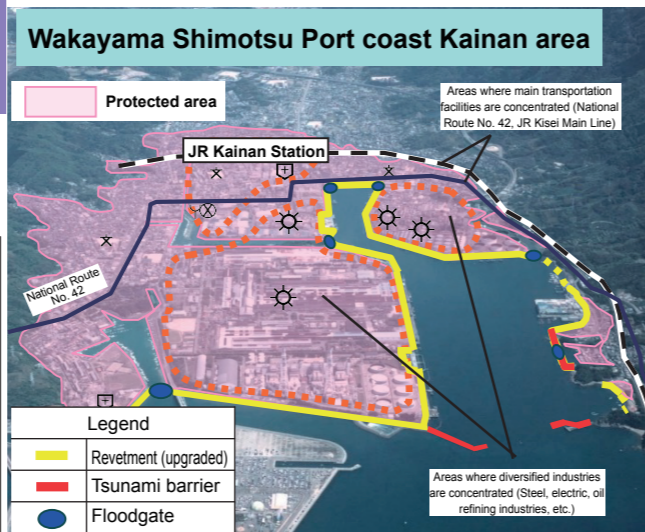


Ports, Harbors and Airports

Disaster Prevention and Reduction Measures

Promotion of the Nankai Trough earthquake countermeasures, etc. Tsunami countermeasure at the Shimotsu Port coast (Kainan area) in Wakayama prefecture

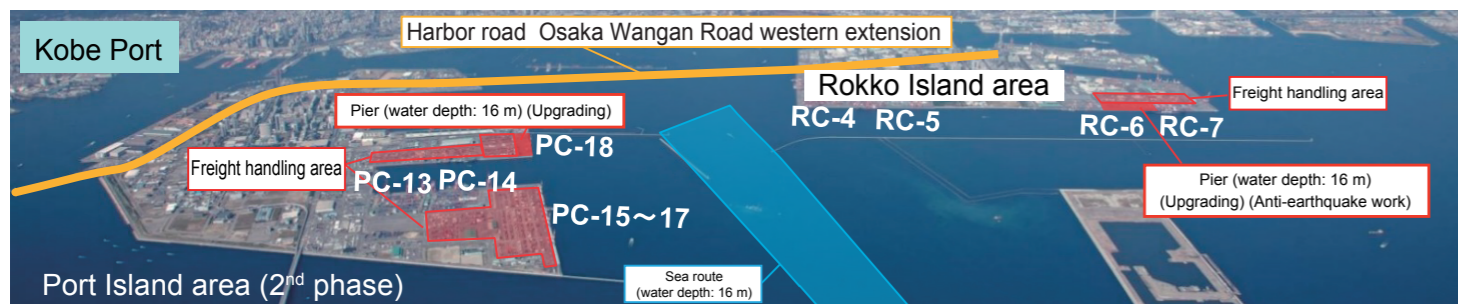
In the tsunami inundation prediction area in Kainan City, Wakayama Prefecture, administrative and disaster prevention center functions and manufacturers of high value added products are gathered. For this reason, we are implementing the improvement of coastal conservation facilities (including raised embankment works) for the protection of these facilities as well as human life and property against large-scale earthquakes, such as the predicted Nankai Trough earthquake.



Achieving sustainable economic growth

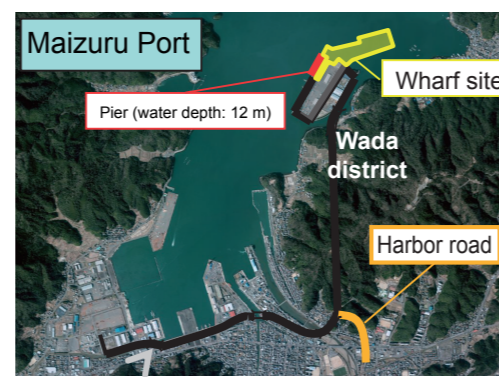
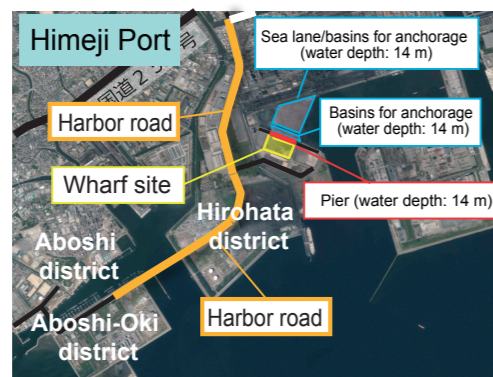
Function enhancement of international container strategy port "Hanshin Port"

The world of maritime transportation and ports / harbors is undergoing change as shipping companies further reorganize their alliances and narrow down their ports of call, and AI, IoT, and other telecommunications and automation technologies rapidly progress. In this context, Japan is working to both improve its industrial competitiveness as well as maintain and improve employment and incomes for Japanese people by continuously implementing a strategic international container port policy that integrates both "hard" and "soft" elements.



Creation of Rich and Vibrant Regions and a Country with Multi-regional Cooperation

In addition to responding to the increase in cargo demand and ship size due to business location and capital investment, we will promote the development of international logistics terminals, such as the development of piers and harbor roads, in order to ensure smooth land transportation.



Public Buildings

Securing Public Safety and Security

Promotion of the Nankai Trough earthquake countermeasures, etc. Strengthening the disaster prevention function of government offices and facilities that will serve as a disaster prevention base

• **Upgrading of government offices and facilities that serve as disaster control bases is being promoted in cooperation with the respective regions**

After disasters such as Nankai Trough giant earthquakes, development of the Osaka sixth district combination government building (tentative name) with the necessary earthquake-resistant performance can go ahead by the PFI method, so that government agencies entering work on disaster prevention move into action precisely.



• **Promotion**

Osaka third district combination government building, repair work of private power generation equipment

Promotion of future-oriented measures addressing aging infrastructure Deterioration measures for government office facilities

- **Extending the life of government building infrastructure**
Tsuruga District Combination Government Building, sanitation repair of outside walls, roof, doors and windows
- **Improvement of the aging deteriorated parts of existing government facilities**
Osaka Port and Harbour Combination Government Building, air conditioning repair

Promotion of the use of wood



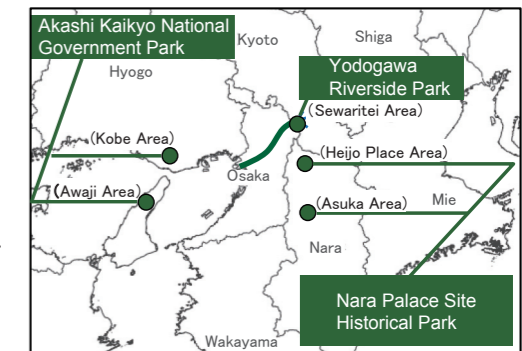
Based on the Act on Promoting the Use of Legally Harvested Wood, wood has been actively used for newly constructed buildings and the interior design of public facilities, including Kyoto Gyoen Nakadachiuri Rest House, Japan Coast Guard's general training building, and the Wakayama Prefectural Anti-riot Police Squad facilities.

Parks

Rich and Vibrant Community Development

Development of tourism base facility in national park

Scan the QR code with your phone to see the website of each park.



Nara Palace Site Historical Park (Heijo Palace Area)



Nara City, Nara Prefecture
People will be guided about the highlights of the entire park including the figures of now and bygone days of the Heijo shrine trace



Visitors can watch temple and shrine carpenters use the techniques of the past to restore the building to its original state

Yodogawa Riverside Park



Kyoto and Osaka
In the Sewaritei Area (Yawata city), people can view the 1.4 km rows of cherry blossom trees from the Observation Tower in spring



Akashi Kaikyo National Government Park (Awaji Area)



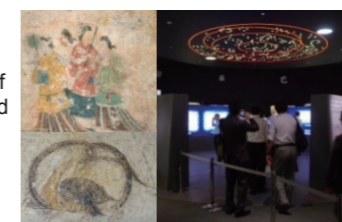
Awaji, Hyogo
People can enjoy the scenery of seasonal flowers including spring tulips throughout the year



Nara Palace Site Historical Park (Asuka Area)



Asuka-mura, Takaichi-gun, Nara
People can see a replica of the sarcophagus excavated from an old burial mound and a restored fresco



Akashi Kaikyo National Government Park (Kobe Area)



Kobe, Kyoto
People can easily experience mountain village life such as old private houses with thatch roofs and farming in the fields

