

Rivers

- River Projects (10 River Systems: Shingugawa River, Kinokawa River, Yamatogawa River, Yodo River, Kakogawa River, Ibogawa River, Maruyamagawa River, Yuragawa River, Kitagawa River, Kuzuryu-gawa River)
- Dam Projects (4 locations: Daidogawa Dam, Amagase Dam, Asuwagawa Dam, Improvement of the dam in the upstream of Kuzuryu-gawa River)
- Landslide Prevention Projects (1 location: Kamenose district)
- Erosion Control Projects (4 locations: Rokkyo Mountain Range, Kidzugawa River System, Kuzuryu-gawa River System, Kii Mountain Range)
- Coastal Area Projects (1 location: Toban Coast)

Safety of the People, Guarantee of Security

Focus on flood/landslide control measures for prevention of recurrence

Emergency measures are taken to prevent the recurrence of disasters in areas that have suffered considerable damage in recent years. In addition, by accelerating advance disaster prevention measures, we secure the local safety and relief.

Maruyamagawa flood control basin project



Emergency flood prevention measures for the Yuragawa River



Emergency flood prevention measure for the Katsura River

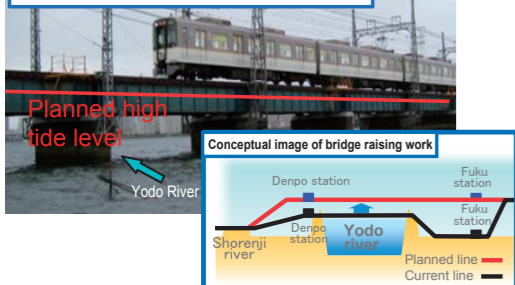


Emergency flood prevention measures at the middle reaches of the Kakogawa River



Hanshin Namba Line Yodogawa Bridge reconstruction project

Problems with the height below the bridge girder were solved by reconstruction.



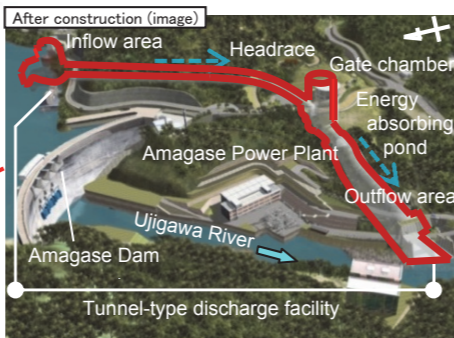
Yamatogawa River High-Grade Embankment Construction Project



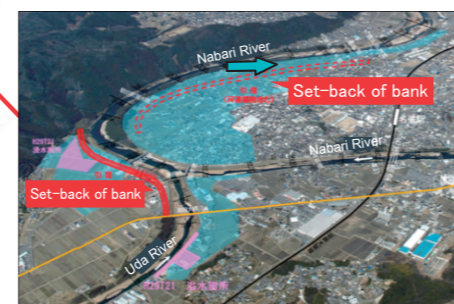
Asuwagawa Dam Construction Project



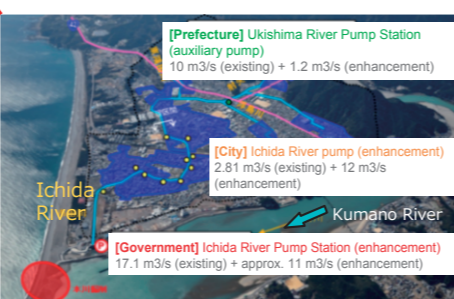
Amagase Dam Restart Project



Nabari Kawamachi Zukuri (make the city from the river) integrated inundation prevention measures

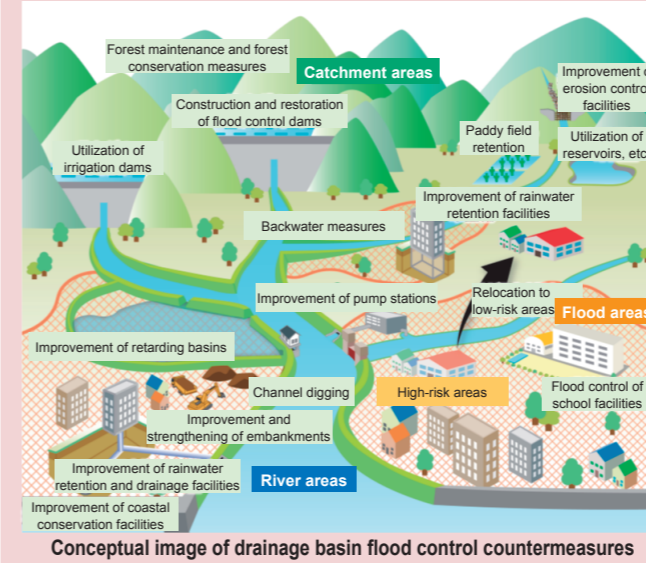


Large scale inundation prevention measures for drainage basin of Ichida River



Promotion of flood control in drainage basins

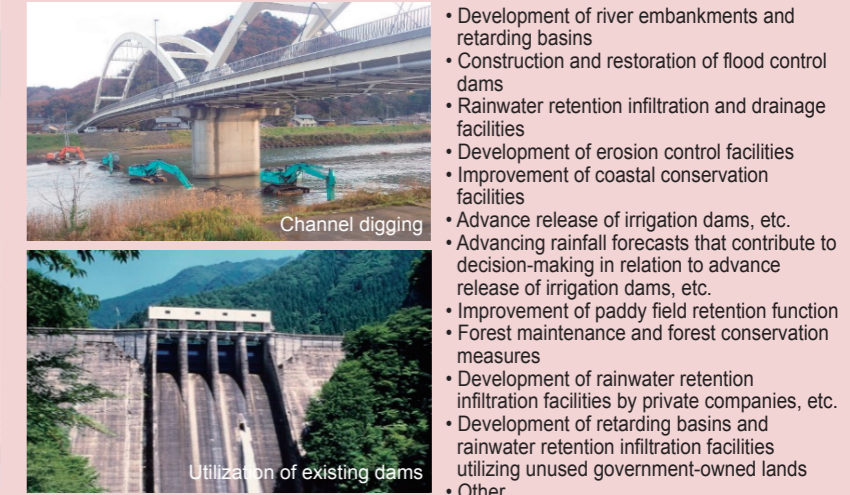
In order to respond to disasters occurring more frequently and causing more severe damage due to climate change, we consider not only the catchment and river areas but also the flooded area as one collective catchment area in our drastic flood control measures. By collaborating with all parties concerned according to the characteristics of the region, we will promote drainage basin flood control from both hardware and software perspectives.



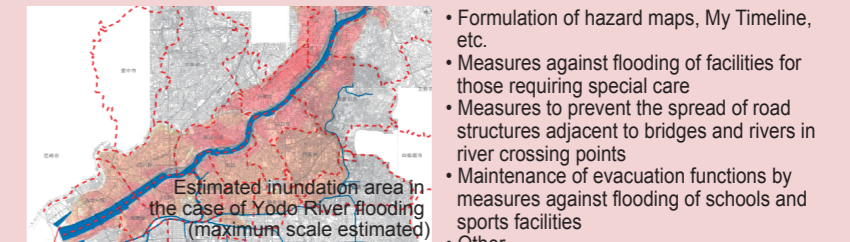
Measures to reduce what may be damaged



Measures to prevent and reduce flooding as much as possible



Measures to reduce damage and achieve early restoration and recovery



Achieving sustainable economic growth

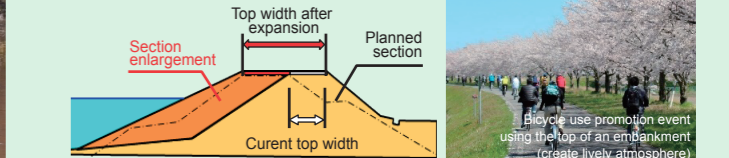
Conservation and regeneration of a rich and diverse natural environment

We will promote the conservation and regeneration of the habitat, growth, breeding environment, etc. of river wildlife. We will work to both secure a favorable river environment and ensure safety and security by utilizing excavated soil and sand for wetland improvement for embankment expansion.

Improvement of wetlands



Expansion of embankments using excavated soil and sand



Project to promote the sharing of hazard/risk information associated with flooding, landslides and other types of disasters to raise residents' awareness of evacuation behaviors

Based on lessons from the July 2018 torrential rain disaster, measures have been reinforced to promote the sharing of information in collaboration with the mass media so that hazard/risk information (floods, landslide disasters, etc.) disseminated by the national or local governments can be linked to evacuation behaviors.



Infrastructure usage that contributes to local regional development through sightseeing

Viewing bridges, dams, and other public infrastructure as sightseeing resources, tours are conducted of such infrastructure in collaboration with tours conducted by private companies. These tours enter locations that people normally cannot enter and thereby help build familiarity with and understanding of the roles of civil engineering.

