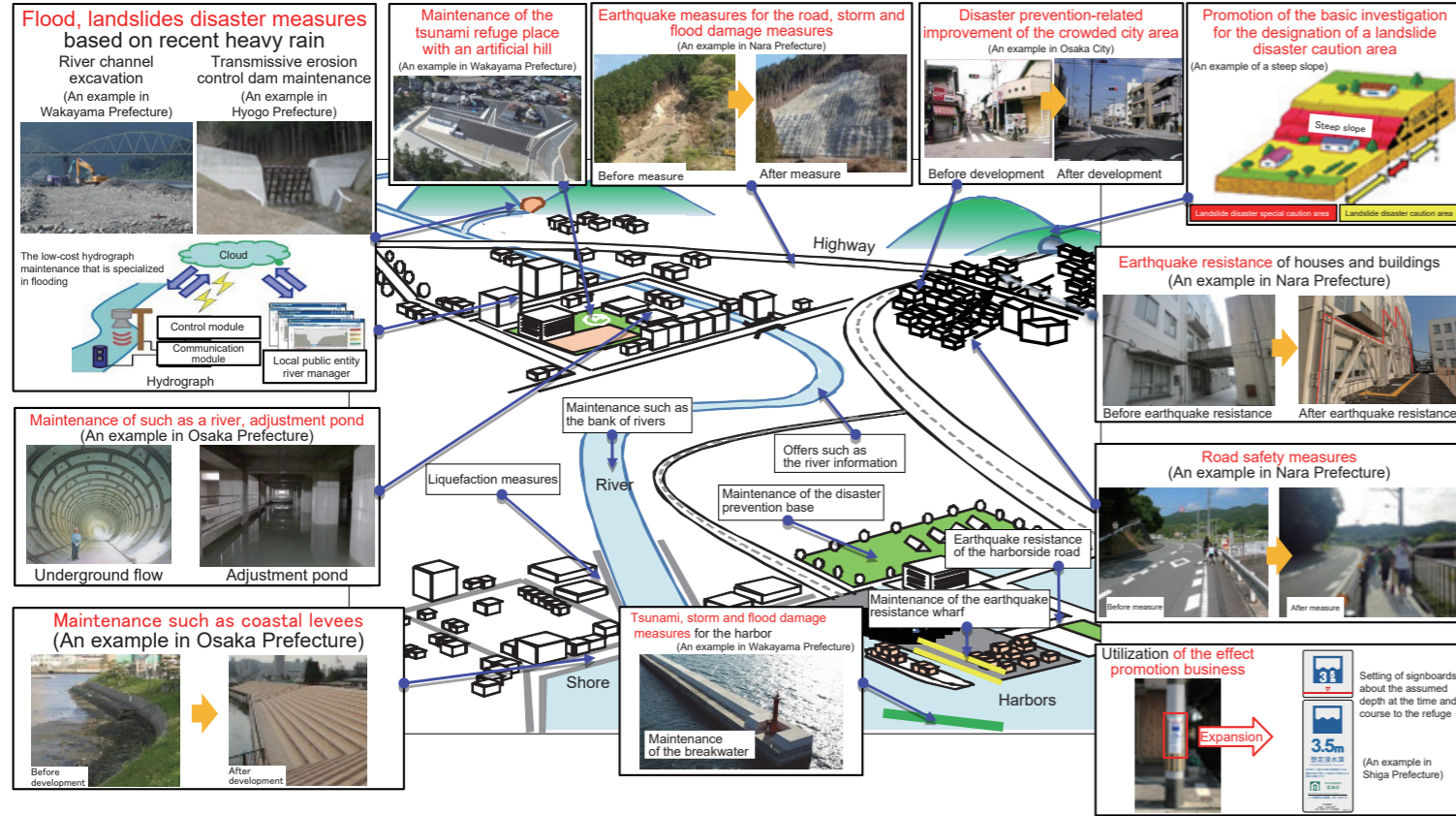


Introduction of disaster prevention/safety grants and comprehensive social infrastructure development grants

Disaster prevention/safety grant (Support intensively "Infrastructure rebuilding to maintain life and living" and "Ensuring safety of the life space")

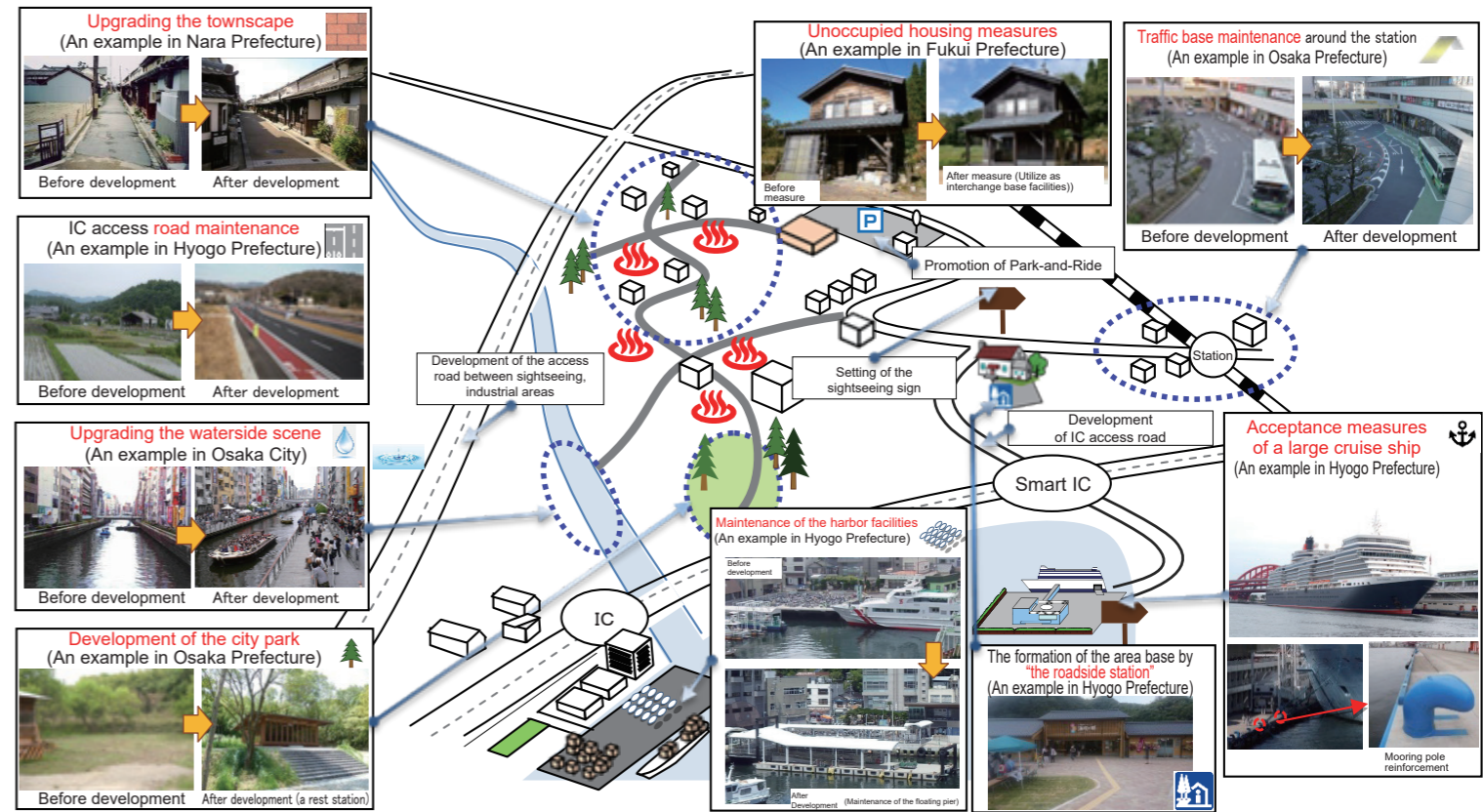
A grant to intensively support the measures against aging of facilities for protecting lives and livelihoods of local residents, the measures for preventing/reducing disaster, and the action of the ensuring safety of the general life space in the area.



Comprehensive social infrastructure development grant

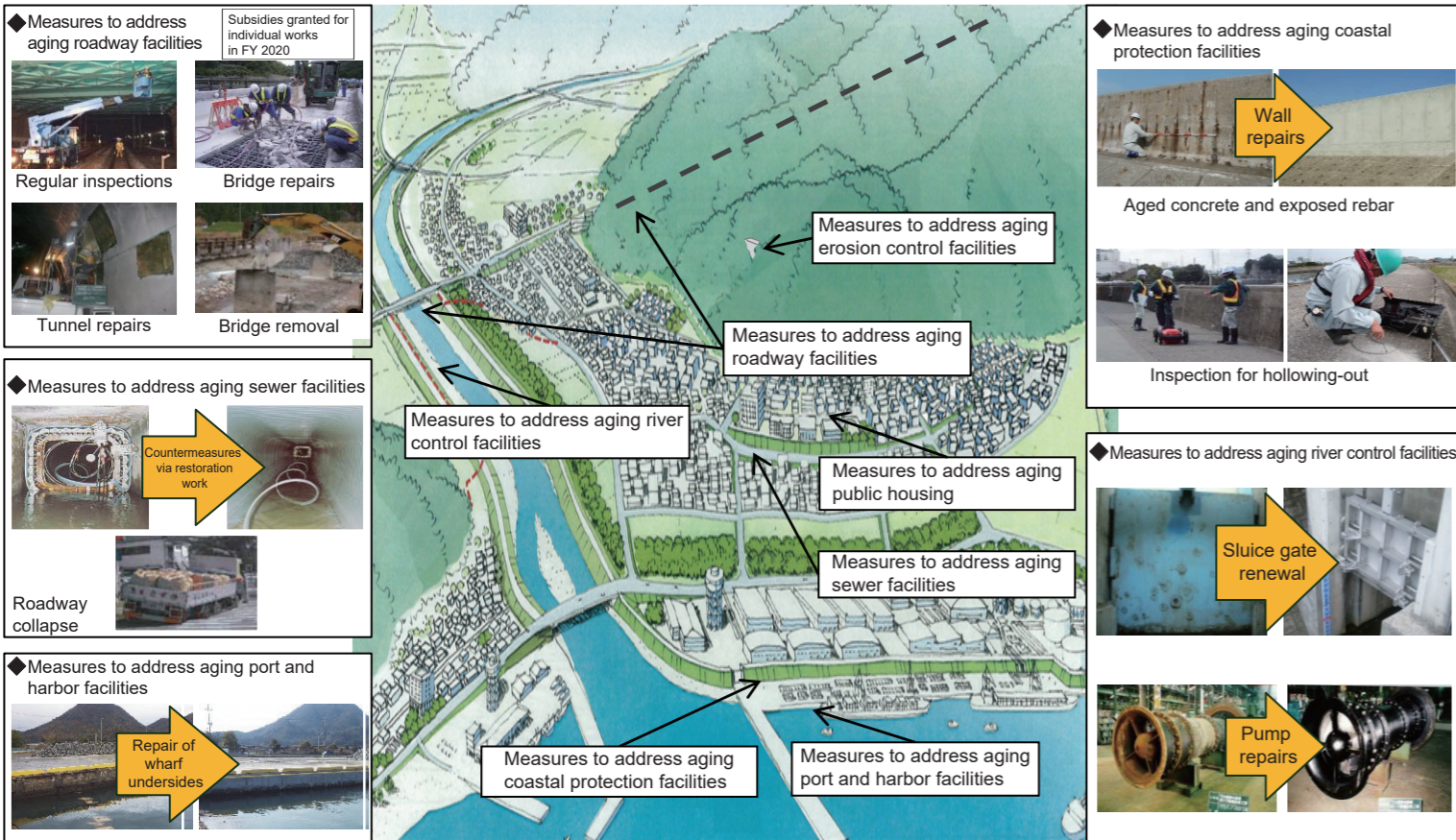
(Business to lead to strengthening growth or regional activation)

Comprehensive grant by incorporating subsidies given to local governments under the jurisdiction of the Ministry of Land, Infrastructure and Transport so that local governments can use it more flexibly and freely and make use of inventive ideas.



Plans

<Measures based on plans to extend the life of infrastructure (image)>



Kansai Regional Plan (Prepared in March 2016)

Kansai Regional Plan

This is a roughly 10-year plan involving the six prefectures of the Kinki region, prepared as a strategic vision to continue to create growth by making optimal use of the experience accumulated so far in the Kinki region and the region's great potential, while addressing various issues, including the falling population, and preparedness for and response to large-scale disasters. To realize the five visions the Kansai region is pursuing, we will launch and promote eight major projects in collaboration with various entities in both the public and private sectors.

Major projects

- 1 Kansai gateway + network project
- 2 Kansai growth engine project
- 3 History, culture and hospitality project
- 4 Keihanshin San-san community development Project
- 5 Project to revitalize regional cities and towns
- 6 Project to invigorate farming, mountain and fishing villages
- 7 Project to make the Kansai region more resilient to natural disasters and undertake collaborative efforts for disaster preparedness
- 8 Project to pursue harmonious coexistence with the environment

Visions the Kansai region is pursuing

- ① A region that serves as a gateway to Asia and a growth engine for Japan
- ② A region rich in Japanese history and traditional culture, thereby appealing to people around the world
- ③ A region in which people can live a life of comfort and affluence
- ④ A region that is resilient to disasters and provides safety and security to both people and industries
- ⑤ A sustainable and environmentally advanced region that enables the harmonious coexistence of people and nature

