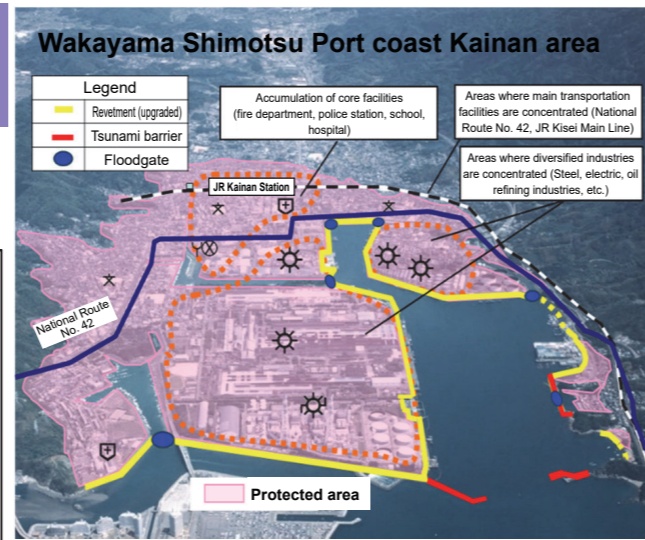


Ports, Harbors and Airports

Disaster Prevention and Reduction Measures

Promotion of the Nankai Trough earthquake countermeasures, etc. Tsunami countermeasure at the Shimotsu Port coast (Kainan area) in Wakayama prefecture

In the tsunami inundation prediction area in Kainan City, Wakayama Prefecture, administrative and disaster prevention center functions and manufacturers of high value added products are gathered. For this reason, we are implementing the improvement of coastal conservation facilities (including raised embankment works) for the protection of these facilities as well as human life and property against large-scale earthquakes, such as the predicted Nankai Trough earthquake.



Revitalization of Economy / Region

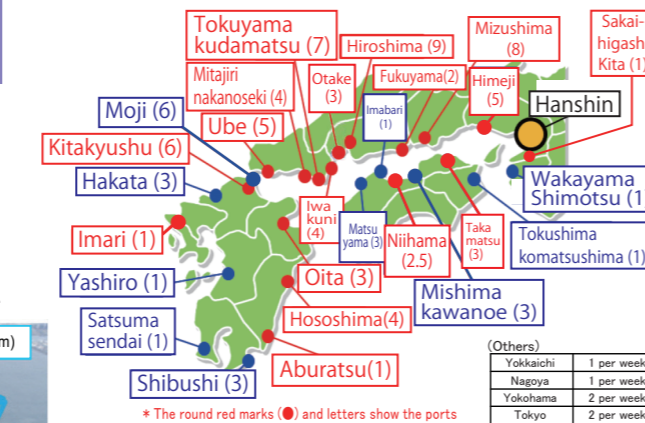
Function enhancement of international container strategy port "Hanshin Port"

The world of maritime transportation and ports / harbors is undergoing change as shipping companies further reorganize their alliances and narrow down their ports of call, and AI, IoT, and other telecommunications and automation technologies rapidly progress. In this context, Japan is working to both improve its industrial competitiveness as well as maintain and improve employment and incomes for the Japanese people by continuously implementing strategic international container port policy that integrates both "hard" and "soft" elements.



To enable large vessels operating on major sea routes to enter Kobe Port and Osaka Port, construction of large container terminals with global standard water depth and area is being promoted. In the Kobe Port district, the construction and improvement of roads have been undertaken to strengthen the function of transportation of sea cargo.

Expansion of the international feeder network by the international strategic harbor competitiveness reinforcement measures



Frequency of visits: Approx. 40% increase
68 visits / week (April 2014)
↓
95 visits / week (October 2019)

Public Buildings

Securing Public Safety and Security

Promotion of the Nankai Trough earthquake countermeasures, etc. Strengthening the disaster prevention function of government offices and facilities that will serve as a disaster prevention base

Upgrading of government offices and facilities that serve as disaster control bases is being promoted in cooperation with the respective regions

After disasters such as Nankai Trough giant earthquakes, development of the Osaka sixth district combination government building (tentative name) with the necessary earthquake-resistant performance can go ahead by the PFI method, so that government agencies entering work on disaster prevention move into action precisely.



Promotion of the earthquake resistance of government office facilities

Nara National Government Building No. 3, earthquake-resistance work

Promotion of ceiling earthquake proofing measures for government office facilities

Hyogo Prefectural Police Academy and Shiga Prefectural Police Academy, ceiling repairs

Promotion of future-oriented measures addressing aging infrastructure
Deterioration measures for government office facilities

Extending the life of government building infrastructure

Nara National Government Building No. 2, life-extension repairs
Toyouka government building, outside wall repairs

Promotion of the use of wood

Based on the Act on Promoting the Use of Legally Harvested Wood, wood has been actively used for newly constructed buildings and the interior design of public facilities, including Kyoto Gyoen Nakadachiuri Rest House, Japan Coast Guard's general training building, and the Wakayama Prefectural Anti-riot Police Squad facilities.



Parks

Rich and Vibrant Community Development

Development of tourism base facility in national park

Yodogawa Riverside Park (Sewaritei Area)

Yawata, Kyoto
People can view the 1.4 km rows of cherry blossom trees from the Observation Tower in spring



Akashi Kaikyo National Government Park (Awaji Area)

Awaji, Hyogo
People can enjoy the scenery of seasonal flowers including spring tulips throughout the year



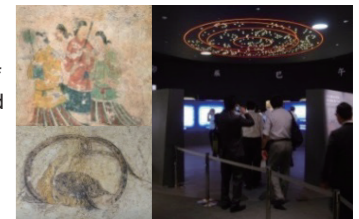
Akashi Kaikyo National Government Park (Kobe Area)

Kobe, Kyoto
People can easily experience mountain village life such as old private houses with thatch roofs and farming in the fields



Nara Palace Site Historical Park (Asuka Area)

Asuka-mura, Takaichi-gun, Nara
People can see a replica of the sarcophagus excavated from an old burial mound and a restored fresco



Nara Palace Site Historical Park (Heijo Palace Area)

Nara City, Nara Prefecture
People will be guided about the highlights of the entire park including the figures of now and bygone days of the Heijo shrine trace

Visitors can watch temple and shrine carpenters use the techniques of the past to restore the building to its original state

