

# Rivers

River Projects (10 River Systems: Shingugawa River, Kinokawa River, Yamatogawa River, Yodo River, Kakogawa River, Ibogawa River, Maruyamagawa River, Yuragawa River, Kitagawa River, Kuzuryu-gawa River)  
 Dam Projects (4 locations: Daidogawa Dam, Amagase Dam, Asuwagawa Dam, Improvement of the dam in the upstream of Kuzuryu-gawa River)  
 Landslide Prevention Projects (1 location: Kamenose district)  
 Erosion Control Projects (4 locations: Rokkyo Mountain Range, Kidzugawa River System, Kuzuryu-gawa River System, Kii Mountain Range)  
 Coastal Area Projects (1 location: Toban Coast)

## Safety of the People, Guarantee of Security

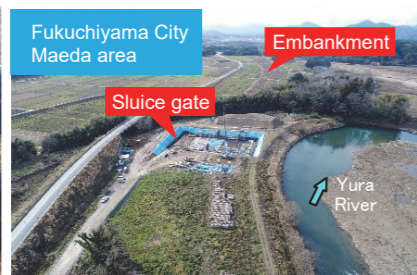
## Focus on flood/landslide control measures for prevention of recurrence

Emergency flood control measures are taken to prevent the recurrence of disasters that have caused considerable damage in recent years. In addition, by the disaster prevention measures that prepare for floods, improve the river security level, and secure the local safety and relief.

### Maruyamagawa flood control basin project



### Emergency flood prevention measures for the Yuragawa River



### Asuwagawa Dam Construction Project



### Emergency flood prevention measures at the middle reaches of the Kakogawa River

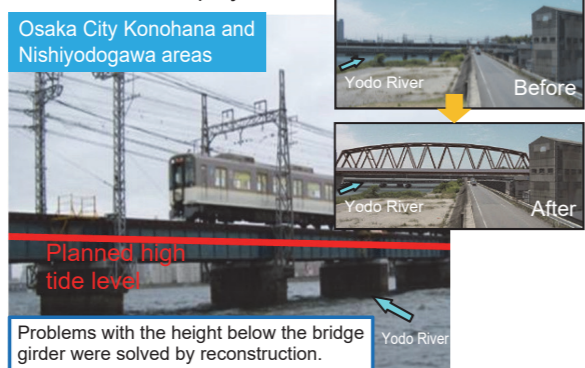
Start: 2017  
Period: Almost 10 years  
Reconstruction of bridges



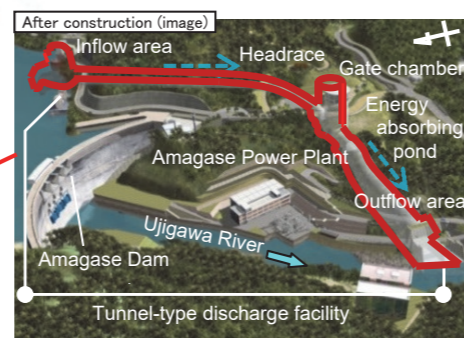
### Yamatogawa River High-Grade Embankment Construction Project



### Hanshin Namba Line Yodogawa Bridge reconstruction project



### Amagase Dam Restart Project



### Directly controlled erosion protection project at Kii Mountain Range

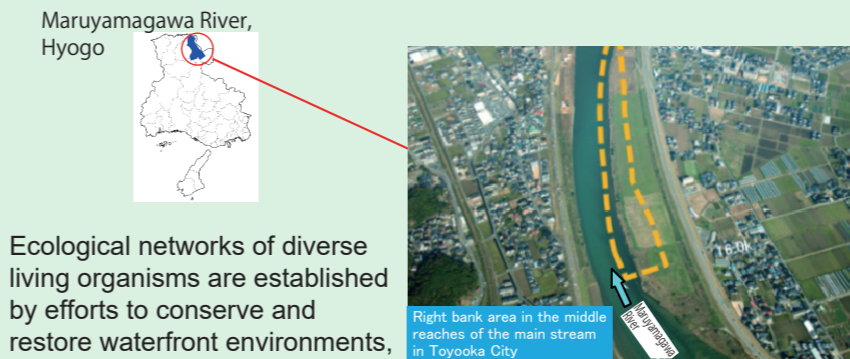


### Emergency flood prevention measures for the Kumano River

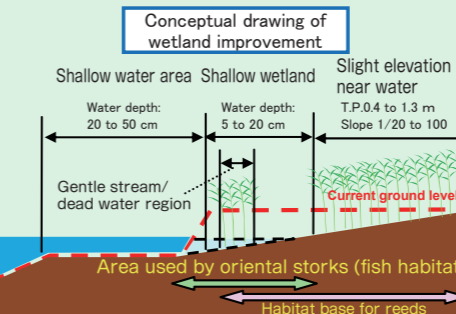


## Regional Revitalization and Realization of an Affluent Life

### Promotion of ecological networks centered on rivers

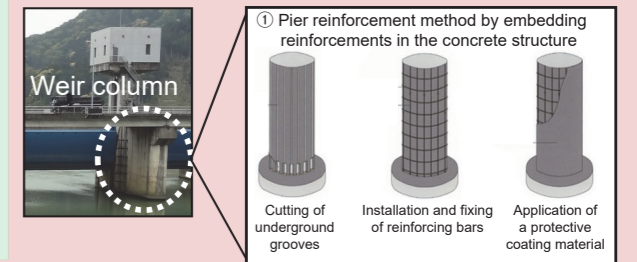


Ecological networks of diverse living organisms are established by efforts to conserve and restore waterfront environments, such as improvement of wetlands.



### Nankai trough megathrust earthquake prevention measure promotion

Anti-earthquake measures are taken to prepare for a possible Nankai Trough Megathrust Earthquake, which may be imminent, and other large earthquakes.



## Disaster prevention measures

Considering that escalating natural disasters have caused severe damage across the nation in recent years, the Kinki Regional Development Bureau will continue to make concentrated efforts to implement the "Urgent Three-Year Project to Prevent and Mitigate Disasters and Make the Nation More Resilient to Disasters" from both "software" and "hardware" perspectives.

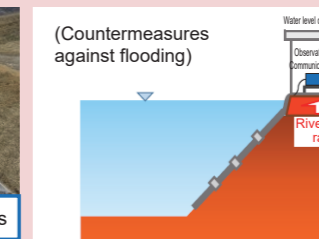
Implementation of hardware-focused measures for crisis management (including rescuing those failing to escape)



Embankments have been built to protect houses even if the river water overflows. [Kinokawa River]



Floodgate observation systems, river monitoring cameras, and other measures



Monitoring systems and communication infrastructure were reinforced by taking measures against nighttime river monitoring failures and power failures.

### Project to promote the sharing of hazard/risk information associated with flooding, landslides and other types of disasters to raise residents' awareness of evacuation behaviors

Based on lessons from the July 2018 torrential rain disaster, measures have been reinforced to promote the sharing of information in collaboration with the mass media so that hazard/risk information (floods, landslide disasters, etc.) disseminated by the national or local governments can be linked to evacuation behaviors.



### Infrastructure usage that contributes to local regional development through sightseeing

Viewing bridges, dams, and other public infrastructure as sightseeing resources, tours are conducted of such infrastructure in collaboration with tours conducted by private companies. These tours enter locations that people normally cannot enter and thereby help build familiarity with and understanding of the roles of civil engineering.

