

Rivers

River Projects (10 River Systems: Shingugawa River, Kinokawa River, Yamatogawa River, Yodo River, Kakogawa River, Ibogawa River, Maruyamagawa River, Yuragawa River, Kitagawa River, Kuzuryu-gawa River)
 Dam Projects (3 locations: Daidogawa Dam, Amagase Dam, Asuwagawa Dam)
 Landslide Prevention Projects (1 location: Kamenose district)
 Erosion Control Projects (4 locations: Rokkyo Mountain Range, Kidzugawa River System, Kuzuryu-gawa River System, Kii Mountain Range)
 Coastal Area Projects (1 location: Toban Coast)

Safety of the People, Guarantee of Security

Focus on flood/landslide control measures for prevention of recurrence

Emergency flood control measures are taken to prevent the recurrence of disasters that have caused considerable damage in recent years. In addition, by the disaster prevention measures that prepare for floods, improve the river security level, and secure the local safety and relief.

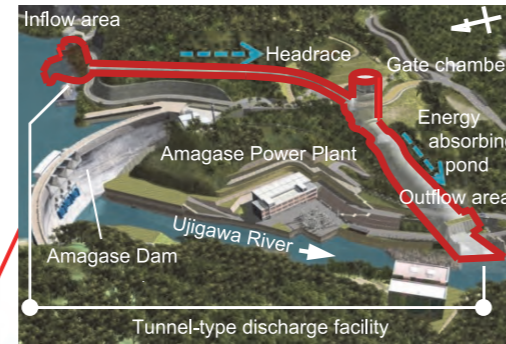
Maruyamagawa flood control basin project



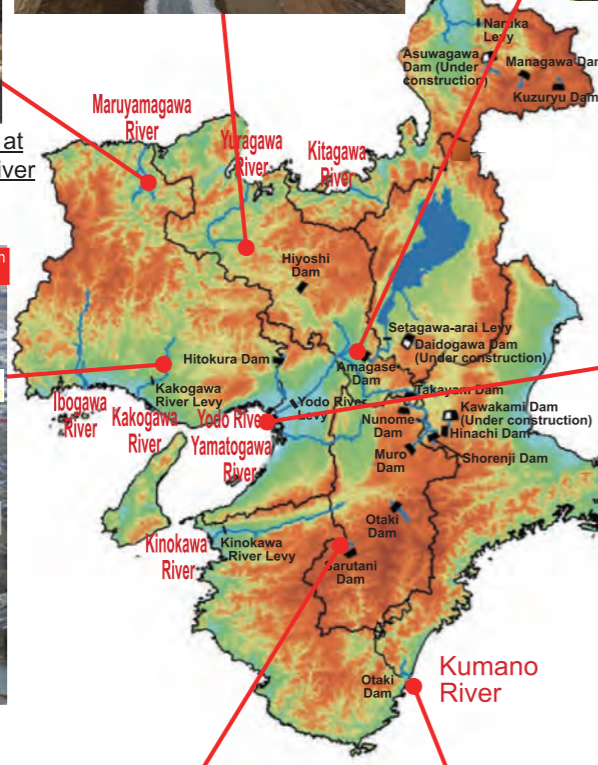
Emergency flood prevention measures for the Yuragawa River



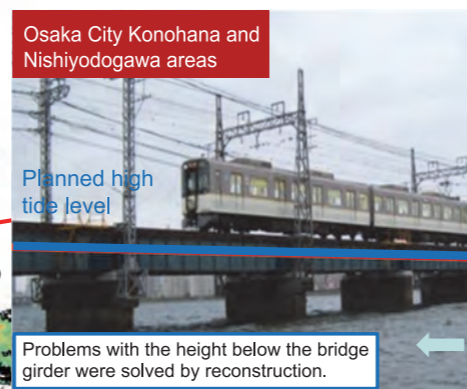
Amagase Dam Restart Project



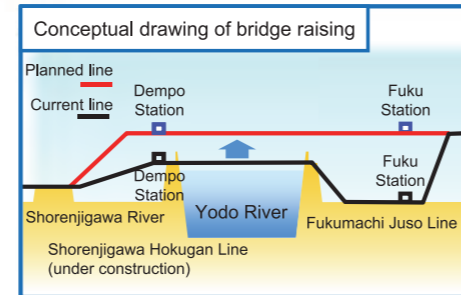
Emergency flood prevention measures at the middle reaches of the Kakogawa River



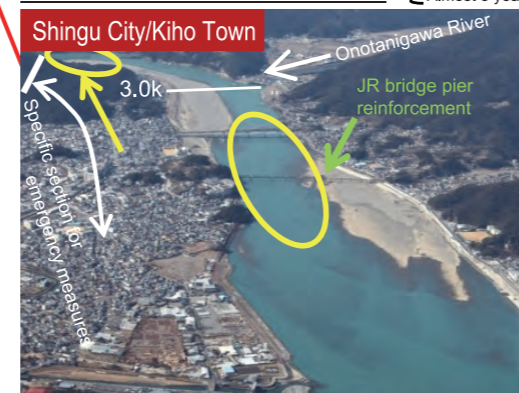
Hanshin Namba Line Yodogawa Bridge reconstruction project



Problems with the height below the bridge girder were solved by reconstruction.



Emergency flood prevention measures for the Kumanogawa River



Directly controlled erosion protection project at Kii Mountain Range



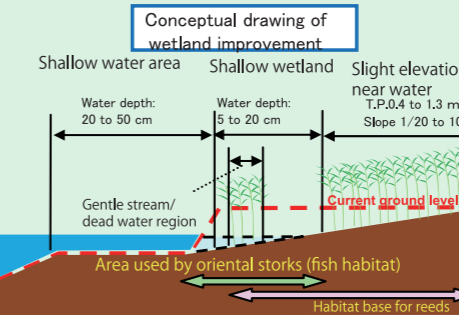
Regional Revitalization and Realization of an Affluent Life

Promotion of ecological networks centered on rivers

Maruyamagawa River, Hyogo



Ecological networks of diverse living organisms are established by efforts to conserve and restore waterfront environments, such as improvement of wetlands.

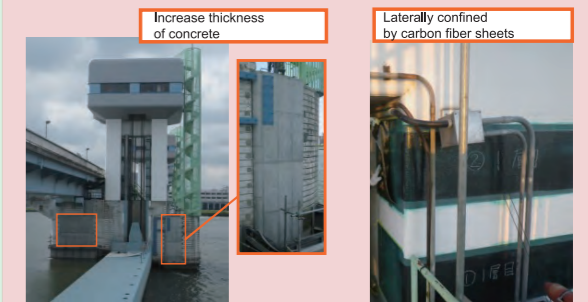


Nankai Trough Megathrust Earthquake Prevention Measure Promotion

Yodo River, Osaka

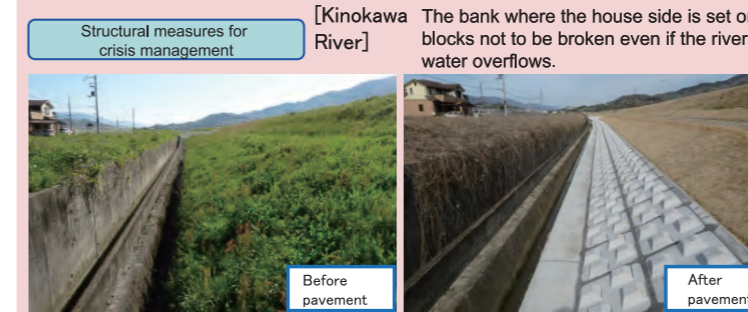


Anti-earthquake measures are taken to prepare for a possible Nankai Trough Megathrust Earthquake, which may be imminent, and other large earthquakes.



Measures taken to rebuild a "Water Damage Prevention Conscious Society"

Under the "Water Damage Prevention Conscious Society Vision," which was established in response to heavy rains in the Kanto and Tohoku regions, projects to improve rivers (measures to prevent large-scale flooding, and structural measures for crisis management), which are planned to be completed in fiscal 2020, will continue to be carried out.



In small or medium size rivers, the setting of a hydrograph for development such as circumstantial judgements or river plans for evacuation have not advanced and grasping the present situation such as the river water level at the time of flooding is difficult. Therefore, in small or medium size rivers having high need of grasping the water level, install low-cost hydrographs (crisis control type hydrograph) specialized for flooding, and support the evacuation of neighborhood residents.

