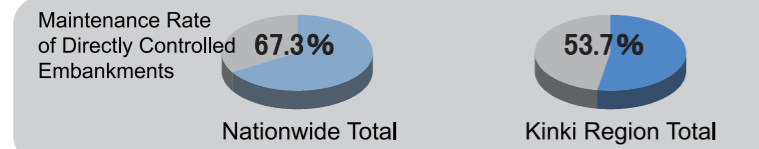


Current Kinki Region Information

Total Length of Protected River ways
 Nationwide Total 88,099.5 km
 Kinki Region Total 10,384.5 km (11.8%)

Source: Ministry of Land, Infrastructure and Commerce: Water Management; Homeland Security Bureau Protected River ways Total Length Report (Current as of April 30th, 2017)



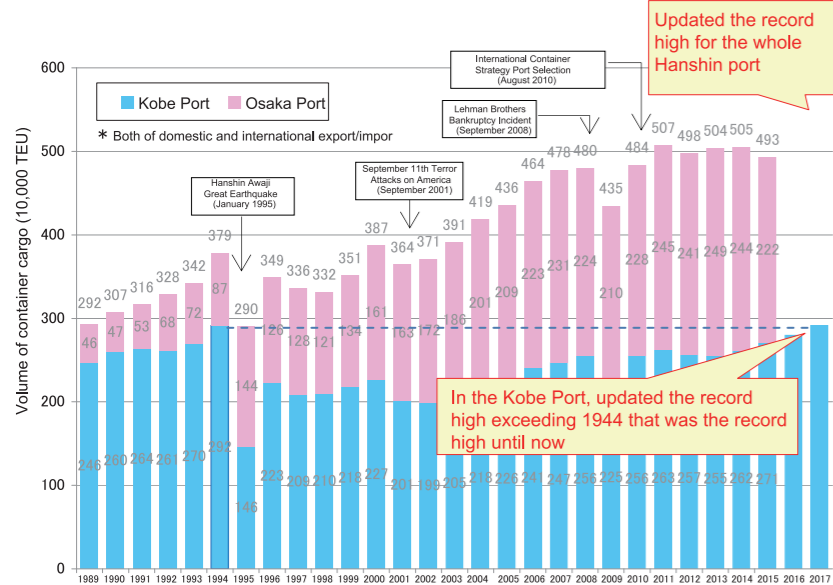
Source: Ministry of Land, Infrastructure and Commerce: Water Management; Homeland Security Bureau: Quality of Directly Controlled River Maintenance Facilities (Current as of the end of March 2017)

Total Length of Specified National Roads
 Nationwide Total 23,653.2 km
 Kinki Region Total 2,164.0 km (9.1%)



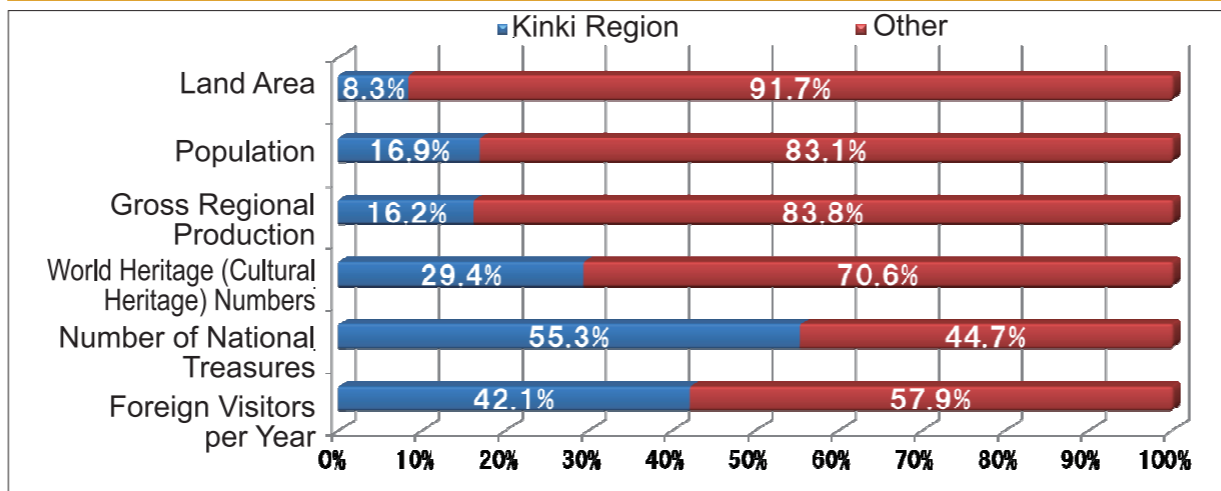
Source: 2017 Annual Report on Road Statistics

Volume of Container Handling Cargo from Hanshin Port



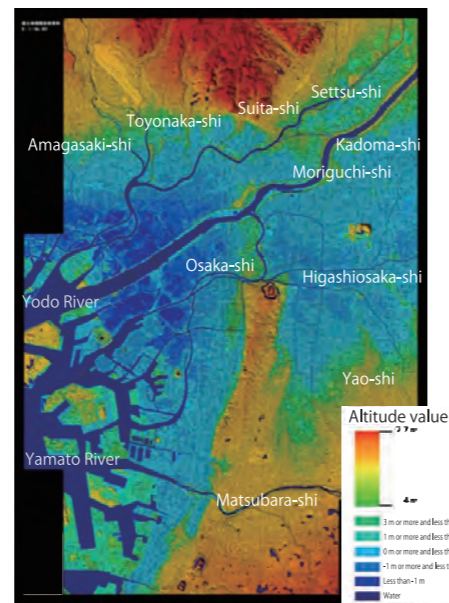
Source: The result of 2017 is a preliminary figure

Data that highlights the Kinki Region within Japan



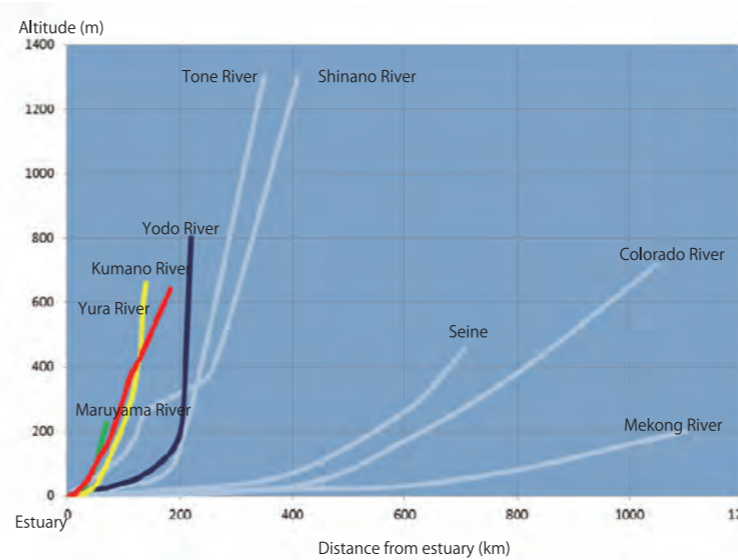
Land Area: Geographical Survey Institute Prefectural Area Report of 2017
 Population: Ministry of Internal Affairs 2016 Census
 Gross Production: Cabinet Prefectural Economic Calculations of 2014
 World Heritage (Cultural Heritage) Numbers: UNESCO Website
 Foreign Visitors per year: Tourism Authority 2017 Foreign Visitor Consumption Trends Survey
 (Each prefecture's visitor number compared to the visitors in the total area of the Kinki Region)

0 Meters above Sea Level Zone (Osaka Plain)



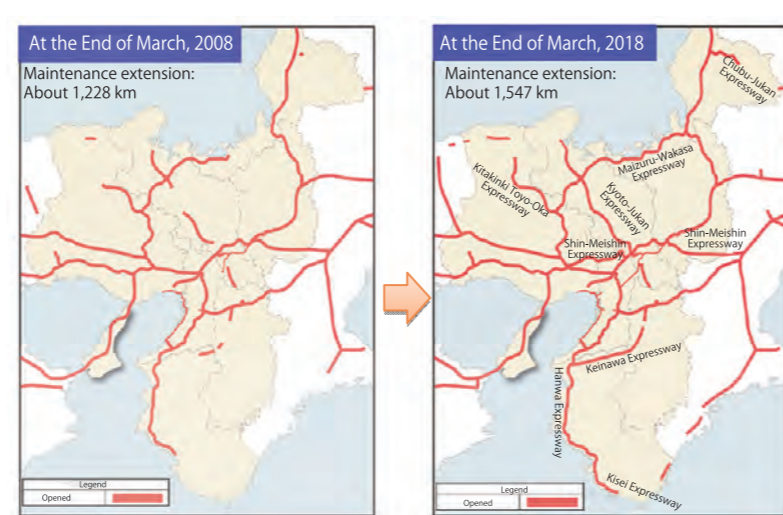
Source: Geographical Survey Institute

Comparison of River Incline between Our Country and Other Countries

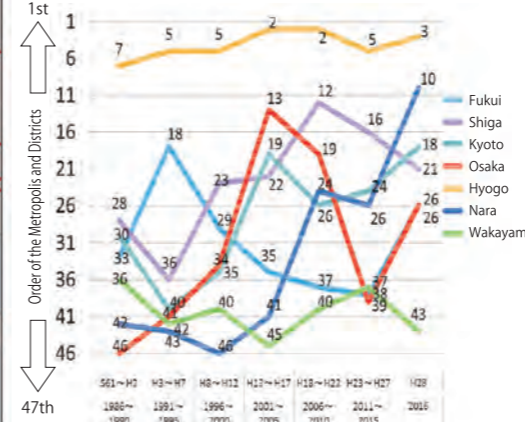


In Japan, because about 70% of the land is mountainous or slanted, rivers have a shorter length in total compared to other countries and has a steep grade. Therefore, when large rain falls, the volume of water increases suddenly, and flows out at a stretch on the plains, and flooding is caused between the plains and estuary coast. In addition, there are many places that are lower than the rivers in the plains where many people live in.

The Situation of Expressway Development



Order of the Metropolis and Districts is According to the Number of New Factory Locations



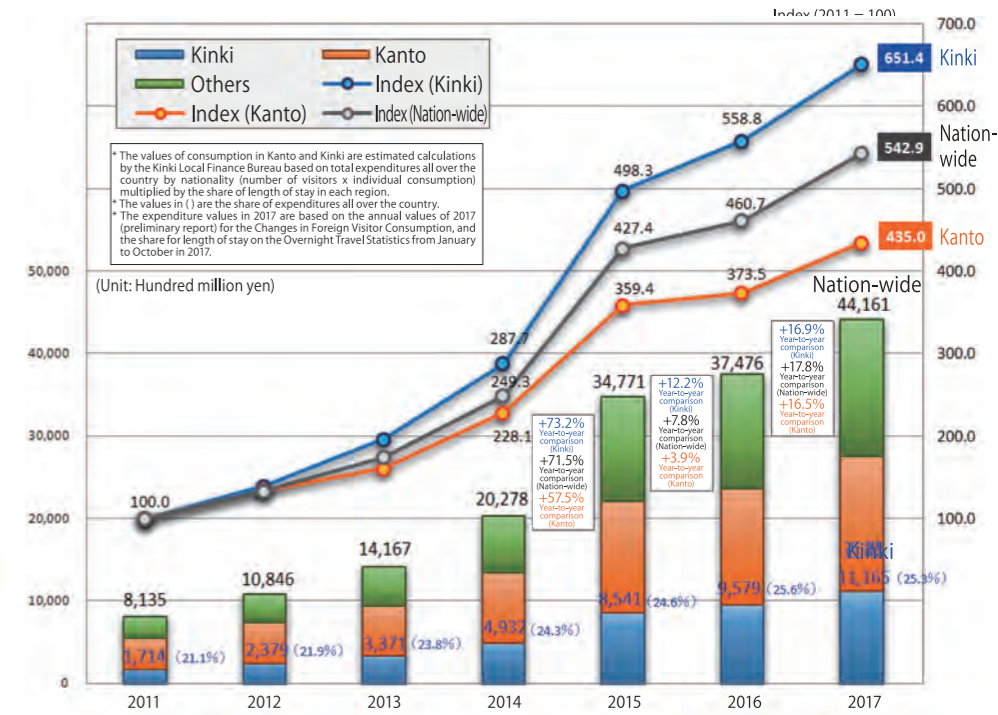
Source: Based on a survey of factory location trends (Ministry of Economy, Trade and Industry), calculated by the Development Bureau

Comparison of GDP between Kinki and Other Countries

Comparison of GDP					
U.S.A.	18,036	U.K.	2,858	Russia	1,326
China	11,158	Canada	1,552	Australia	1,230
Japan	4,383	Korea	1,377	Kinki Region	792

Source: Ministry of Internal Affairs Communications and Statistics Bureau, 2017 World Statistics Country Statistics Current 2015; Kinki Current 2014

Changes in Foreign Visitor Consumption (over the entire country, Kanto and Kinki)

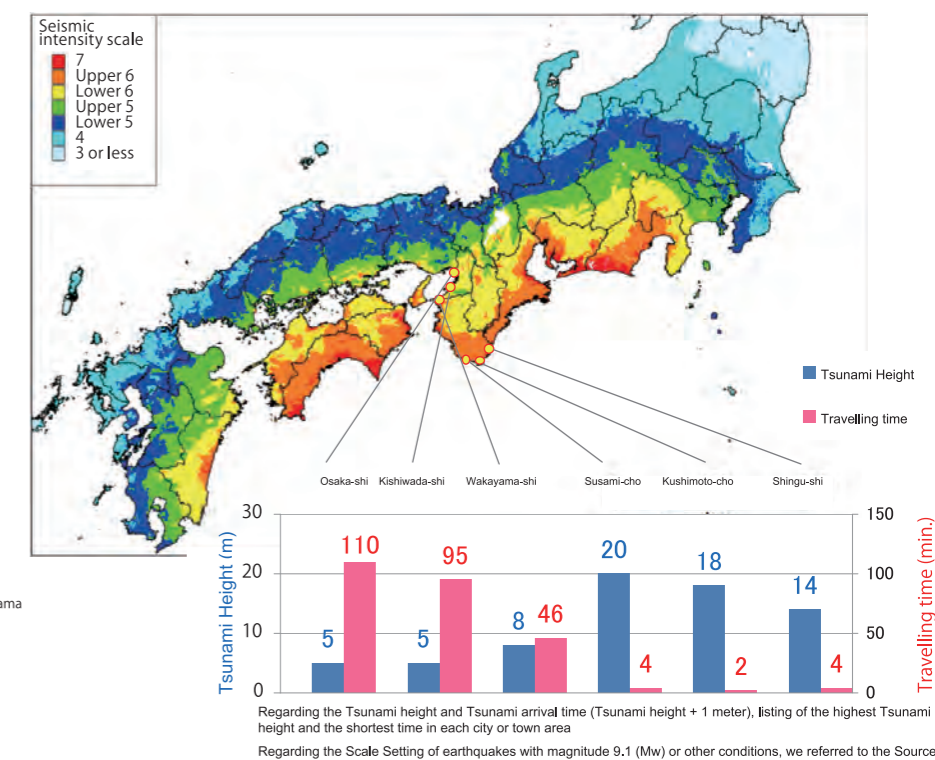


Travel expenditure per foreign tourist visiting Japan/ Year-to-year comparison (Nation-wide) (Unit: Yen)

Year	2011	2012	2013	2014	2015	2016	2017
Expenditure	130,819	129,798	136,693	151,174	176,167	155,896	153,921
Change (%)	-	-2.0%	5.3%	10.6%	16.5%	-11.5%	-1.3%

Source: Japan National Tourism Organization (JNTO) The Consumption Trends of International Visitors to Japan Survey and the Overnight Travel Statistics Survey by the Japan Tourism Agency

Nankai Trough Megathrust Earthquake Magnitude Distribution and Tsunami Height



Source: Cabinet Office, Nankai Trough Megathrust Earthquake Model Investigative Commission (Secondary Report) (August 29th, 2012)