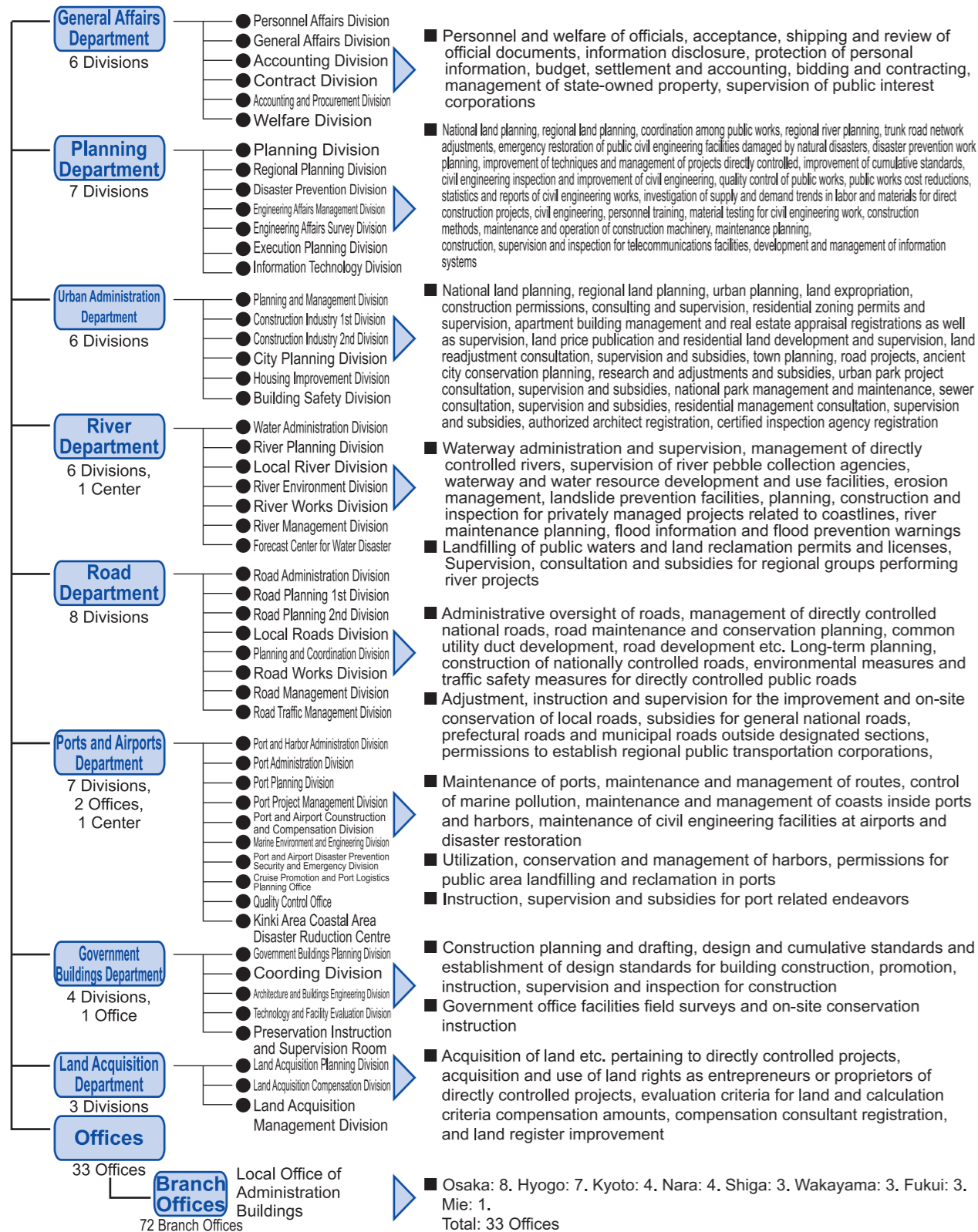


# Kinki Regional Development Bureau Summary

## Office Jurisdiction

Bureaus are located in both Kobe and Osaka cities. Framework includes Administrative, Construction Planning, Rivers, Roads, Ports and Harbors, Maintenance and Land for a total of 8 Departments, 47 divisions, 3 offices and 2 centers (Ports and Harbors are controlled in Kobe). To fulfil the duties of the bureau, there are 33 offices with 72 branches. As of July 1<sup>st</sup>, 2017, there are 2,235 employees of the Kinki Regional Development Bureau that carry out the duties of the bureau.

## Kinki Regional Development Bureau Framework



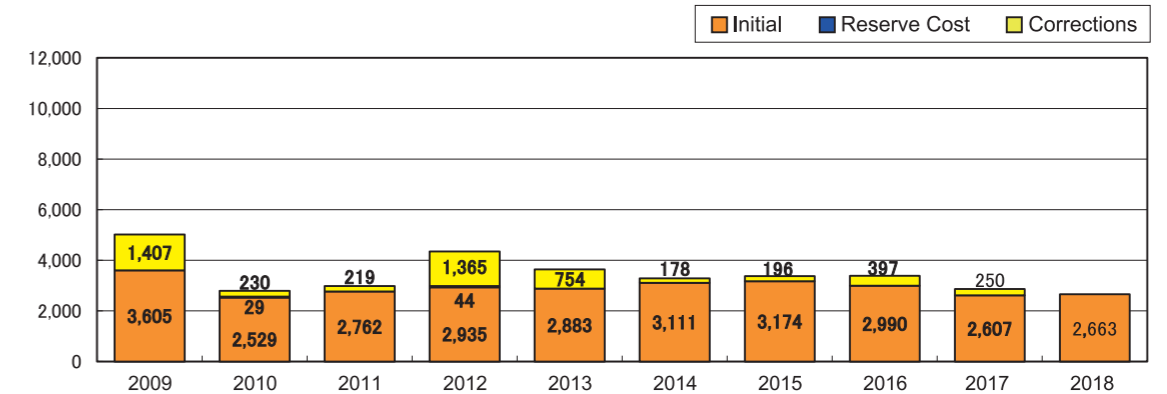
## Kinki Regional Development Bureau History

March 1874	The Home Ministry Osaka Branch of Civil Engineering was established.
May 1875	Home Ministry Osaka Branch of Civil Engineering had its name changed to Home Ministry Civil Engineering Osaka Bureau.
January 1877	The Home Ministry Civil Engineering Osaka Bureau was restructured and renamed to Home Ministry Yodo River Branch of Civil Engineering (Yodo River Management and Construction).
July 1886	Following the orders of the Supervising Officer of Civil Engineering, the bureau was reorganized into the 4 <sup>th</sup> Ward Supervision Office and gained direct control over the Chubu and Kinki areas and began performing and supervising civil engineering works.
July 1894	Name changed to Fifth Ward Civil Supervision Office. Jurisdiction changed to Kinki, Tokushima and Kochi areas.
April 1905	Name changed to Civil Engineering Office, Osaka Branch of the Ministry of Home Affairs. Supervision authority was transferred to the Ministry and the civil engineering office absorbed responsibility for civil engineering for directly controlled land.
April 1919	Civil Engineering Office, Kobe Branch of the Ministry of Home Affairs was established. The jurisdiction of the office in Osaka changed.
November 1943	The Harbor Division changed to the Transport Ministry of Communication, 3 <sup>rd</sup> Port Construction Department. The Osaka Civil Engineering office changed into the Kinki Civil Engineering Office of the Ministry of Home Affairs and under order of Transport Ministry of Communication, 3 <sup>rd</sup> Port Construction Department was merged with the Kobe office and the jurisdiction changed to include everything east of Hyogo due to the establishment of the Chubu Shikoku office.
May 1945	Because of government revisions, the Transport Ministry of Communication, 3 <sup>rd</sup> Port Construction Department became the Ministry of Transportation 3 <sup>rd</sup> Port Construction Department.
January 1948	Home Affairs changes into the Prime Minister Office Kinki District Construction Bureau and became the local office for the Prime Minister's Office.
July 1948	According to the founding of the Ministry of Construction, the Prime Minister Office Kinki District Construction Bureau had its name changed to Ministry of Construction Kinki District Construction Bureau.
August 1952	Ministry of Transportation 3 <sup>rd</sup> Port Construction Department had its name changed to Ministry of Transportation 3 <sup>rd</sup> Port Construction Bureau.
December 1958	Ministry of Construction Kinki District Construction Bureau moved from 2-6 Tosabori-dori, Nishi-ku, Osaka to its current location at the Osaka Joint Government Building at 1-5-44 Otemae, Chuo-ku, Osaka.
May 1968	Due to a revision in the Ministry of Transportation Installation Law, the Ministry of Transportation 3 <sup>rd</sup> Port Construction Bureau absorbed the duties of airport engineering works. The Airport Engineering Division was established.
January 2001	Due to the reorganization of ministries and agencies, the Ministry of Construction Kinki District Construction Bureau and the Ministry of Transportation 3 <sup>rd</sup> Port Construction Bureau were merged. Furthermore, the Ministry of Land, Infrastructure and Transport Kinki Regional Development Bureau was established.

## Kinki Regional Development Bureau Budget Change

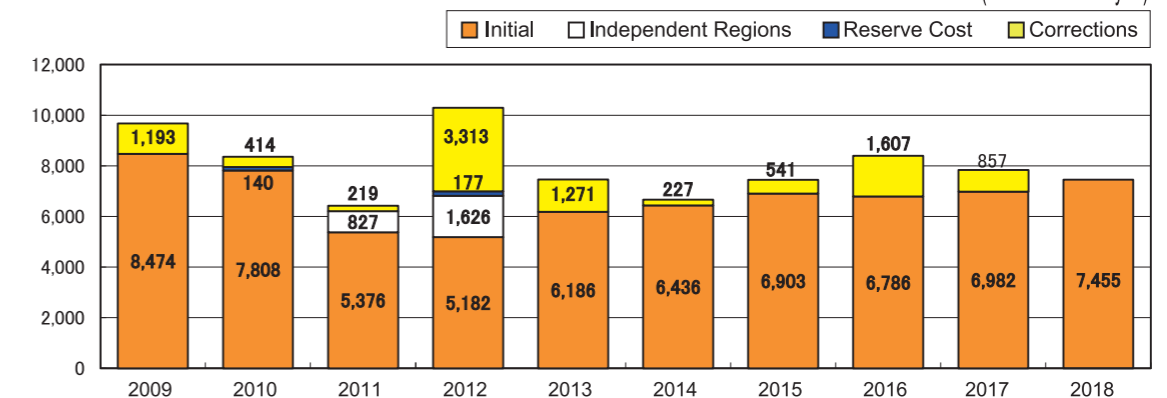
### Kinki Regional Development Bureau Budget Change (Direct Control)

(Unit: 100 million yen)



### Kinki Regional Development Bureau Budget Change (Subsidies and grants)

(Unit: 100 million yen)



Overview of Budget Corrections from 2009 Onward (Excluding Direct Control and Treasury Debt Burden Act) (Unit: 1 million yen)

	FY 2009		FY 2010		FY 2011		FY 2012		FY 2013	
	Initial	Corrections	Initial	Corrections	Initial	Corrections	Initial	Corrections	Initial	Corrections
Flood Control	75,510	28,003	52,255	5,589	59,376	4,602	68,919	41,279	72,241	16,035
Coasts	723	1,189	843	120	2,096	50	2,478	512	2,089	0
Road Maintenance	256,270	35,500	186,107	17,129	180,225	15,236	184,282	82,952	173,705	47,469
Harbors	18,626	75,718	6,581	210	22,545	250	23,193	10,282	28,217	11,518
National Parks etc.	4,170	200	3,159	0	4,839	0	3,335	56	3,883	150
(General Public Total)	355,299	140,610	248,945	23,048	269,081	20,138	282,206	135,081	280,134	75,172
Office Building Maintenance	3,884	60	3,647	0	6,308	1,751	11,272	1,437	8,142	260
Airports	1,349	0	303	0	834	0	0	0	0	0
(Total)	360,532	140,670	252,895	23,048	276,223	21,889	293,478	136,518	288,276	75,432

	FY 2014		FY 2015		FY 2016		FY 2017		FY 2018	
	Initial	Corrections	Initial	Corrections	Initial	Corrections	Initial	Corrections	Initial	Corrections
Flood Control	76,522	3,922	77,859	12,920	72,022	10,713	66,227	11,181	67,571	-
Coasts	2,302	0	1,525	-	2,215	345	2,637	408	2,677	-
Road Maintenance	189,623	12,583	196,462	6,524	178,086	25,755	148,238	12,658	157,124	-
Harbors	33,607	1,000	34,544	200	33,775	2,422	31,449	450	31,586	-
National Parks etc.	4,210	0	4,954	0	6,154	480	6,504	300	4,977	-
(General Public Total)	306,264	17,504	315,344	19,644	292,253	39,715	255,055	24,997	263,935	-
Office Building Maintenance	4,847	313	2,068	0	6,721	0	5,582	0	2,079	-
Airports	0	0	0	0	0	0	44	0	280	-
(Total)	311,111	17,817	317,412	19,644	298,974	39,715	260,681	24,997	266,294	-

\* Service Handling Fees are excluded from FY 2010 on