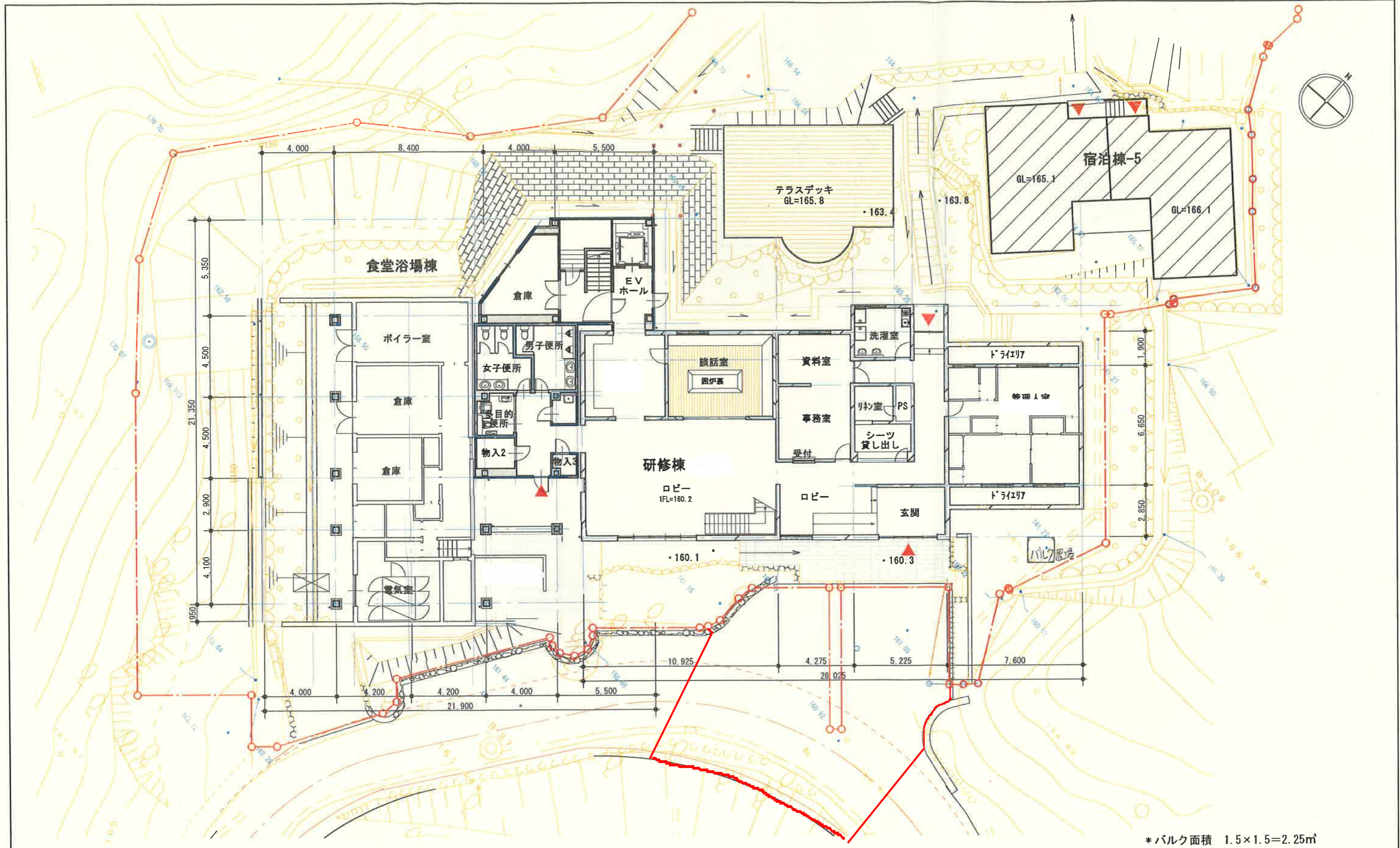


点番号	Yn	Xn	Zn
KK43	-170390.005	-16423.845	-17278.47875
KK44-1	-170392.055	-16427.671	-1712.77876
KK46	-170390.009	-16429.809	49388.00584
KK47	-170395.091	-16434.469	116898.37797
KK48-1	-170397.122	-16431.884	38420.32816
KK50	-170397.490	-16432.200	38977.17840
KK51	-170399.494	-16433.633	40821.14437
KK52	-170399.074	-16434.089	16335.48448
KK53	-170400.489	-16434.482	34972.58976
KK54	-170402.102	-16435.451	39360.24234
KK55	-170402.822	-16435.719	22844.25374
KK56	-170403.498	-16435.748	32674.26704
KK58	-170404.810	-16435.511	42817.28023
KK60	-170406.091	-16434.820	37274.38850
KK61	-170407.078	-16434.248	85630.87744
KK62	-170411.810	-16430.482	125678.75818
KK63	-170414.727	-16428.205	58038.60725
KK64	-170415.321	-16428.019	29208.01782
KK65	-170416.595	-16428.292	19532.41874
KK66	-170416.513	-16428.305	8840.55485
KK67	-170417.104	-16428.382	10218.45304
KK68	-170417.135	-16428.300	22145.34840
KK69	-170418.452	-16428.404	43008.58172
KK70	-170419.753	-16428.185	31278.28420
KK71	-170420.358	-16427.870	19585.71220
KK72	-170420.844	-16427.578	41118.22784
KK73	-170422.859	-16428.080	51228.84224
KK74	-170424.083	-16428.810	65301.46810
KK75	-170426.835	-16418.884	81538.57524
KK76	-170429.029	-16416.602	60482.34516
KK77	-170430.518	-16415.489	73818.84887
KK78	-170433.532	-16411.604	59818.788204
KK79	-170434.180	-16410.822	215785.88878
KK80	-170446.681	-16409.258	311828.21878
KK81	-170453.160	-16413.704	175002.81208
KK82	-170457.343	-16418.573	21502.58824
KK83	-170469.049	-16424.249	23171.28249
KK84	-170471.418	-16421.188	173571.95780
KK85	-170476.818	-16415.848	270894.32388
KK86	-170487.820	-16403.448	166828.22484
KK87	-170488.778	-16402.404	77081.28880
KK88	-170489.220	-16399.156	28550.23564
KK89	-170485.157	-16397.032	14828.15244
KK90	-170484.112	-16396.080	-109214.28880
KK91	-170479.496	-16393.482	-108808.81850
KK92	-170477.487	-16393.281	-39254.87482
KK93	-170476.834	-16394.333	-142323.87441
KK94	-170468.810	-16390.239	-125008.35283
KK95	-170469.007	-16389.802	2753.48876
KK96	-170468.878	-16389.222	-8788.23370
KK97	-170468.472	-16388.535	-21403.42870
KK98	-170467.672	-16388.309	-24828.28835
KK99	-170466.957	-16388.683	-16470.60815
KK100	-170466.867	-16388.881	-78178.43850
KK101	-170466.187	-16388.880	-78658.32240
KK102	-170461.787	-16384.641	-18888.64384
KK103	-170461.083	-16384.449	-37454.84356
KK104	-170459.501	-16384.634	-41438.73886
KK105	-170458.554	-16384.582	-149378.051784
KK106	-170450.384	-16377.115	-74384.85830
KK107	-170454.012	-16373.135	49577.85280
KK108	-170458.412	-16378.574	-28818.87988
KK109	-170452.753	-16372.056	-50254.05884
KK110	-170448.504	-16374.883	-78778.61023
KK111	-170447.842	-16374.788	-8907.88924
KK112	-170447.880	-16374.688	-93712.338424
KK113	-170442.219	-16372.957	-242431.52284
KK114	-170433.654	-16362.353	-144328.52830
KK115	-170433.409	-16362.128	-49244.67588
KK116	-170430.648	-16359.342	-49492.74348
KK117	-170430.415	-16359.187	-49308.37188
KK118	-170430.283	-16359.384	-49471.67378
KK119	-170428.473	-16377.743	-108887.52851
KK120	-170423.738	-16380.983	-65378.50913
KK121	-170420.871	-16384.180	-38882.43520
KK122	-170420.060	-16385.309	-55872.218544
KK123	-170417.455	-16388.895	-52913.28355
KK124	-170416.831	-16387.257	-10798.20283
KK125	-170416.789	-16387.197	-38871.78882
KK126	-170414.895	-16387.179	-48818.87558
KK127	-170413.884	-16387.684	-43738.755286
KK128	-170411.838	-16380.891	-77197.18710
KK129	-170409.284	-16384.931	-51758.787167
KK130	-170408.779	-16385.189	-25808.30838
KK131	-170407.722	-16386.579	-50075.152286
KK132	-170405.725	-16400.033	3378.405788
KK133	-170407.828	-16402.042	7495.733184
KK134	-170408.182	-16403.292	-50343.28336
KK135	-170404.885	-16408.899	-39138.87034
KK136	-170403.789	-16404.330	-55887.87820
KK137	-170401.452	-16405.870	-73744.38550
KK138	-170399.301	-16408.372	-61888.238720
KK139	-170397.692	-16412.108	-46871.447872
KK140	-170396.438	-16413.248	-47220.814486
KK141	-170394.815	-16415.701	-58751.78379
KK142	-170392.880	-16418.582	-77500.32840
備註			2020.009210
総計			3020.00

玄関前広場 (汚水配管除く) 129.06 m²
 汚水配管 4.80 m²
 合計面積 3153.86 m²

上記境界座標は、座標変換ソフトにより、既存境界座標 (旧日本測地系) を世界測地系へと変換計算を行っている。
 また、新たに境界線を変更・追加し面積を算出している。
 よって、現地既存境界杭、基準点等との整合を確認すること。

点名KK: 旧座標を新座標に変換 変換ソフトウェア: TKY2MJD Ver. 2.1.1
 点名D: 用地境界変更点



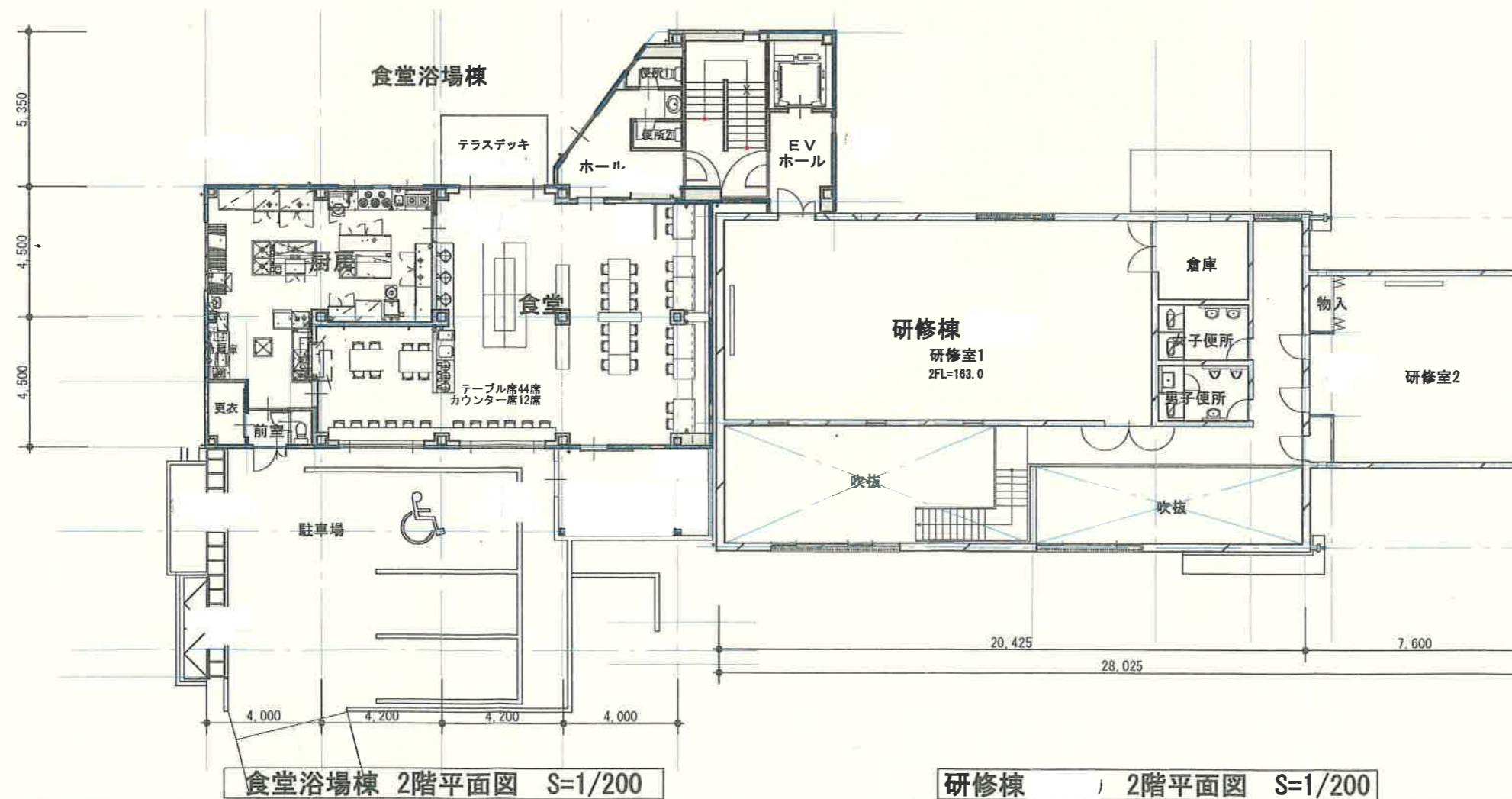
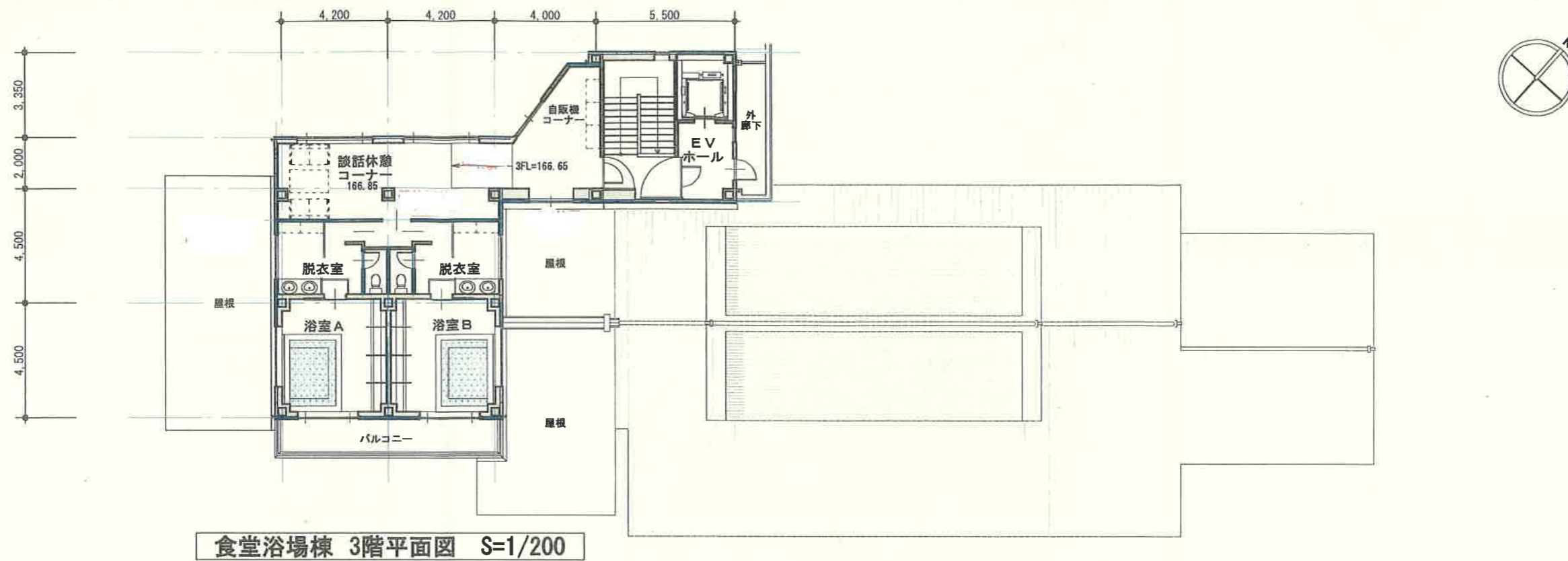
食堂浴場棟 1階平面図 S=1/200

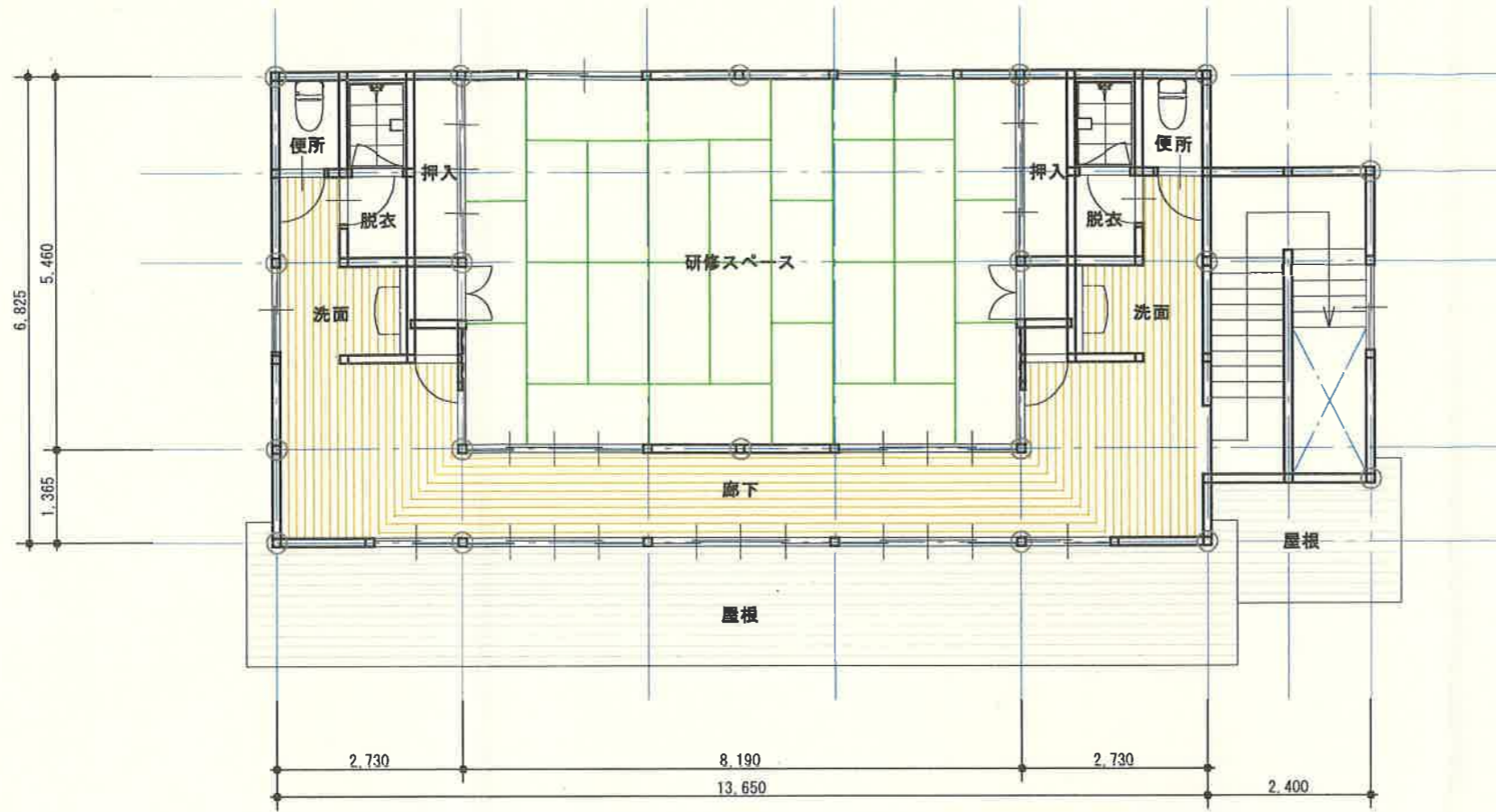
研修棟 1階平面図 S=1/200

*バルク面積 1.5×1.5=2.25㎡

研修棟 延べ床面積 499.45m²
 食堂浴場棟 延べ床面積 585.39m²

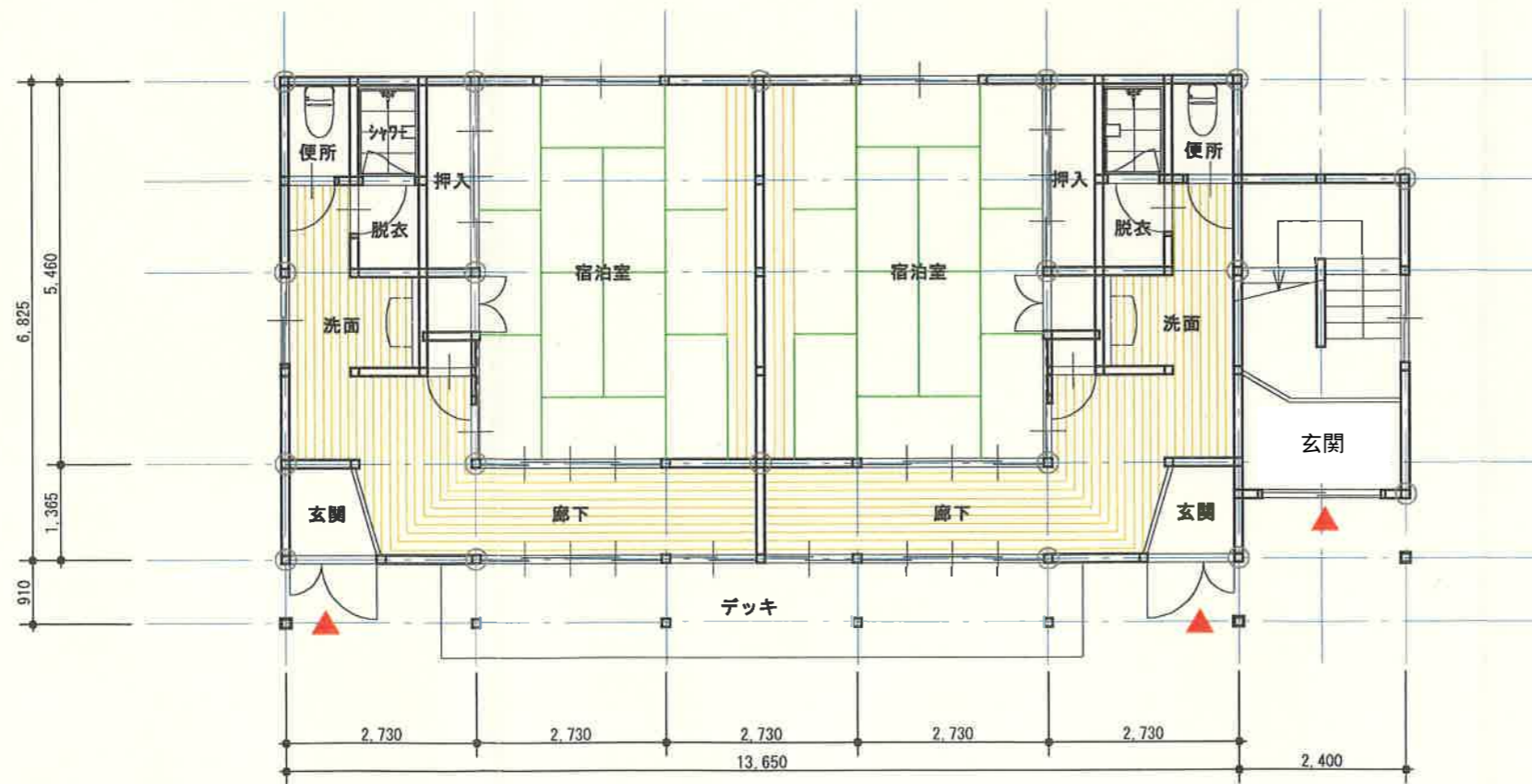
		飛鳥宿泊研修所	設計図
		研修棟、食堂浴場棟 平面図 S=1/200	-
		キタイ設計(株)	-





2階床面積 101.29m²

宿泊棟-1 2階平面図 S=1/100

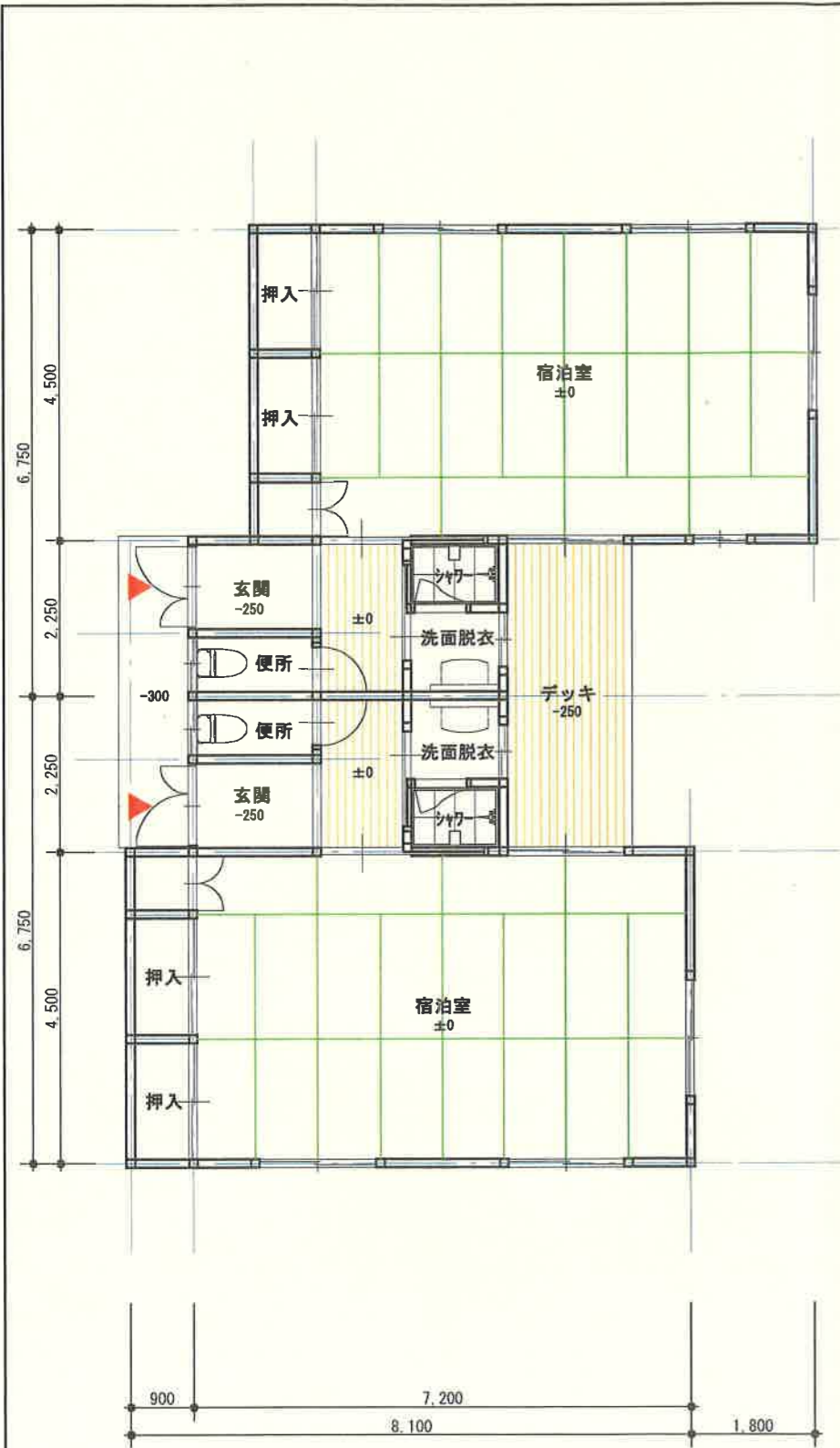


1階床面積 103.95m²

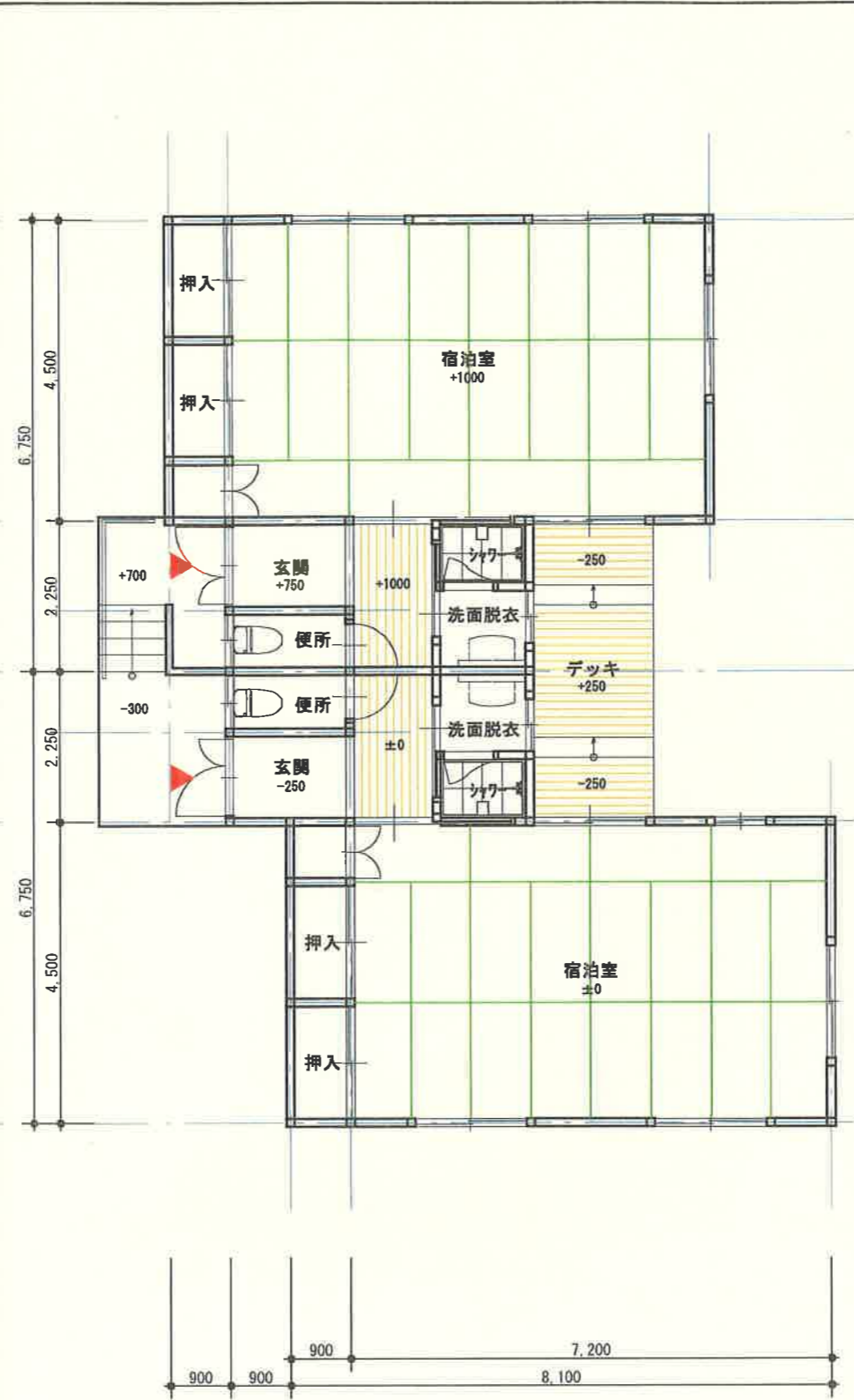
延べ床面積 205.24m²

宿泊棟-1 1階平面図 S=1/100

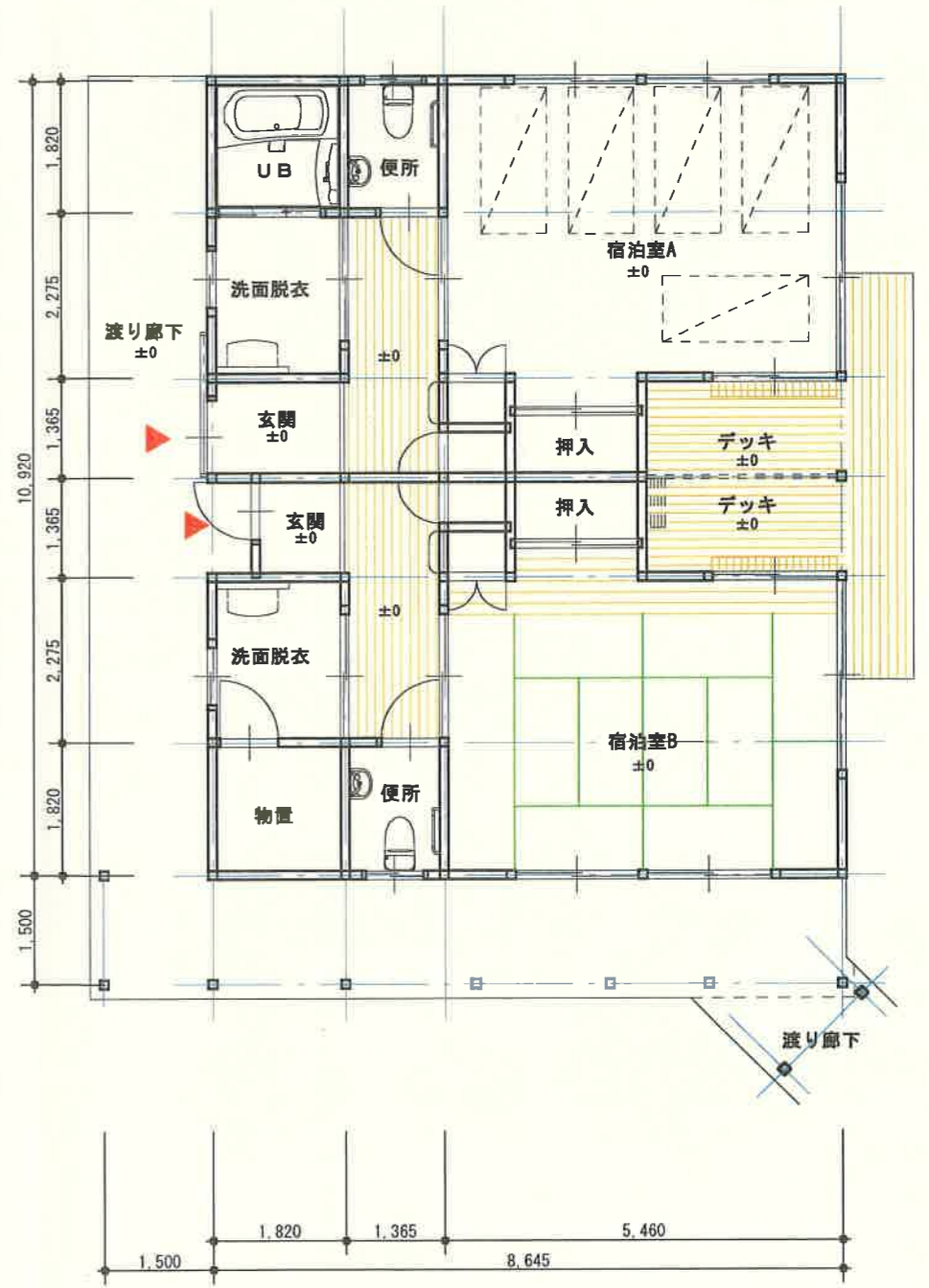
			飛鳥宿泊研修所	設計図
			宿泊棟-1 平面図	S=1/100 -
			キタイ設計(株)	-
			<small>一級建築士26785号 北川勉之助</small>	



宿泊棟-2 1階平面図 S=1/100

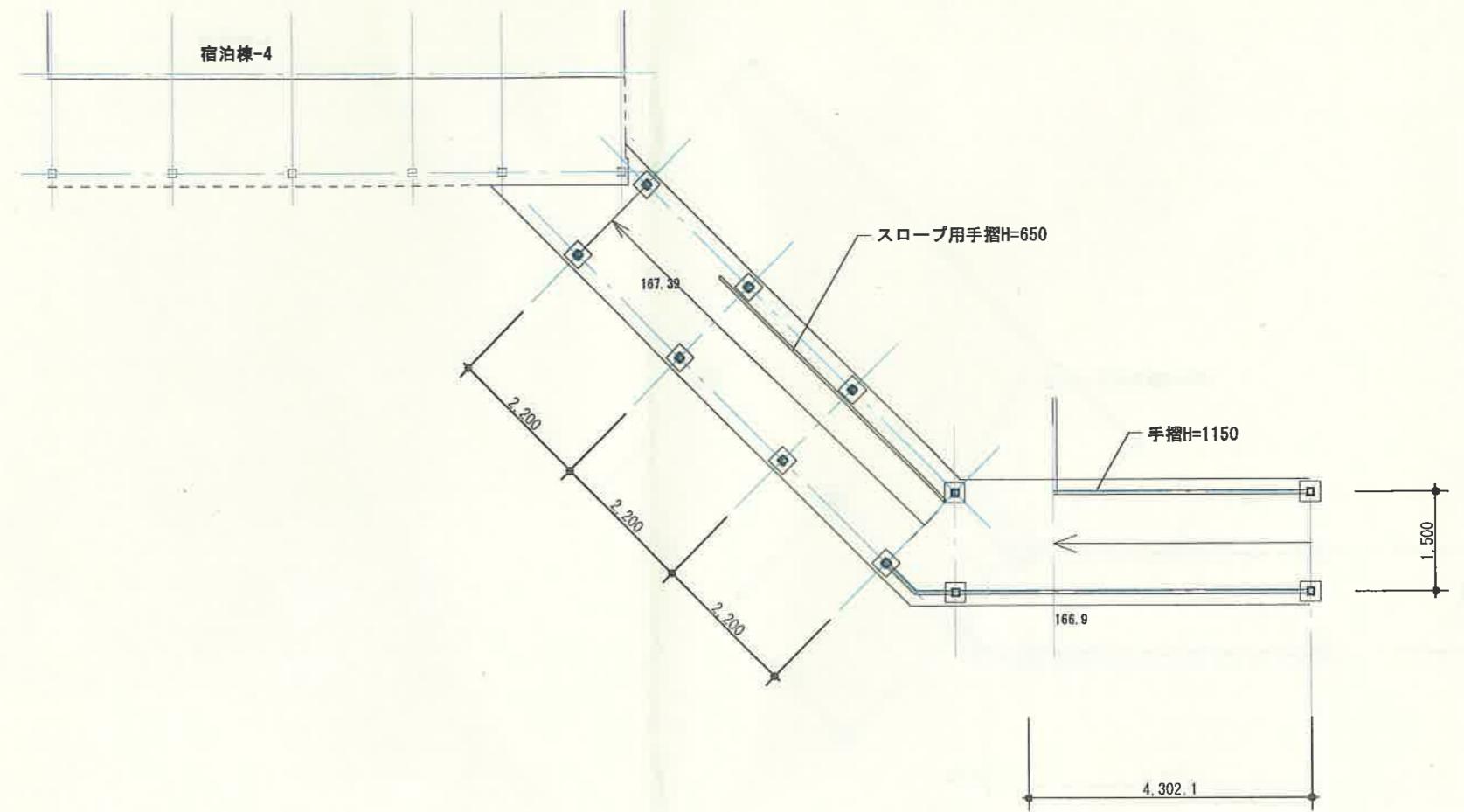
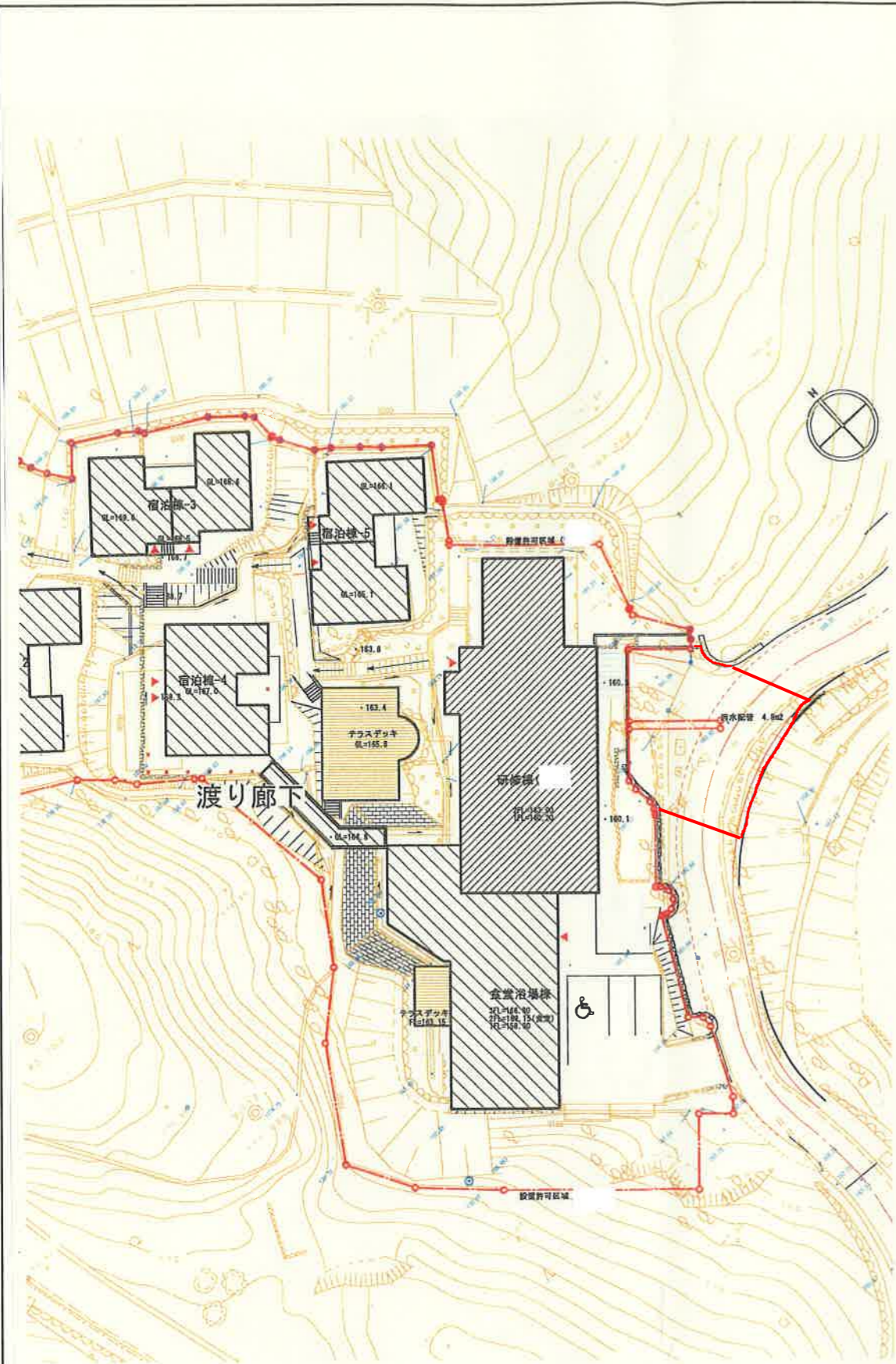


宿泊棟-3・5 1階平面図 S=1/100



宿泊棟4(車椅子対応) 1階平面図 S=1/100

			飛鳥宿泊研修所	設計図
			宿泊棟-2~5 平面図	S=1/100
			キタイ設計(株)	-
			一級建築士20285号 北尾祐之助	-



渡り廊下平面図 S=1/100

			飛鳥宿泊研修所	設計図
			渡り廊下平面図	S=1/100
			キタイ設計(株)	一級建築士25285号 北原敏之助